





## Self-Service

Convenience and efficiency at your service

Wash efficiently and economically with ease, as well as in as little time as possible by using a self-service laundrette. Fagor Industrial is a company that specialises in the manufacturing of industrial laundry machinery and particularly in solutions such as self-service laundry. That is why we offer the perfect equipment for self-service laundrettes which provide the best features for optimising performance with the best facilities for the user.

Professional laundry

Washers



COMPACT  
series

High spin (LA)

Fast spin (LR)

Normal spin (LN)

ADVANCE

**Where there is a problem, there is an innovative solution.**

Comfort and efficiency at your service

Tumble dryers



System of transportable modules



CONCEPT

Economic-line

Laundry2go

At Fagor Industrial we have always focused on innovative solutions. Our innovations go beyond the industry's standards, thus opting for new and better ideas. We offer solutions for self-service laundries and Wet Cleaning, or "Laundry2GO", the transportable module system that allows laundry establishments to be created in just one step.



# Professional laundry

High speed professional washer extractors.....	215
Professional dryers .....	218

Special models or any other variant on the standard model are to be assembled in factory, and carry a supplement over the price indicated for the standard model.

Please consult Fagor Industrial for any other variant or option not reflected on this list.

COMPACT  
*series*

# Self-service Machinery for the Professional laundry





# High speed professional washer extractors



## General Characteristics

- High-spin floating washer extractors. Do not need to be anchored to the floor.
- Tank with 4 detergent compartments.
- 2 standard water inlets.
- Equipped with variable-frequency drive

(standard 50-60 Hz). Balancing system controlled by the same drive.

- Model with drain valve (V) and model with drain pump (P).
- Model with valve specially designed for

washing mops.

- Includes leveller feet.
- CE and WRAS product certifications.

### Options:

- Double drain (only valve model).
- Drain pump kit.
- Drain normally closed "NC". In case of power failure, the water stays inside the tank.
- 6 extra signals for dosing: a total of up to 14 available.
- Silicone door seal.

- Door with opposite opening.
- Delayed door opening, in case of power failure.
- Unit in AISI 304 stainless steel.
- Plinth that facilitates access to the machine.
- Special mop plinth (with filter) - valve models only.

- Plinth and water recovery tank.
- Kits for self-service: Pay station, token mechanism, coin mechanism.
- Voltage 110 1N 50/60 Hz.
- Voltage 440 3~ (No N) 50/60 Hz



## Models

- **STANDARD Code 19:** Use this code for orders of machines that do not include any option or version different from standard.  
The retail price is the one indicated in the table.

- **Code 18 WITH OPTIONS:** Use this code for orders of machines that include some option or options from the **OPTIONS ON DEMAND** table.

- The retail price is calculated by adding the price increases for each option to the retail price of the standard code.

MODEL	CODE 19 (STANDARD)	CODE 18 (WITH OPTIONS)	DRAIN	HEATING	CAPACITY KG	SPEED		POWER*		DIMENSIONS (MM)	€
						R.P.M.	G	(KW)	(V)		
LAP-08 TP2 E V	19053089	18001733	Valve	Electric	8	1,250	450	6.25	T	680x698x1,040	-
LAP-08 TP2 E P	19053091	18001734	Pump	Electric	8	1,250	450	6.25	T	680x698x1,040	-
LAP-08 TP2 HW V	19053094	18001735	Valve	Hot water	8	1,250	450	0.75	M	680x698x1,040	-
LAP-08 TP2 HW P	19053095	18001736	Pump	Hot water	8	1,250	450	0.75	M	680x698x1,040	-
LAP-10 TP2 E V	19052197	18001690	Valve	Electric	10	1,250	450	6.25	T	680x742x1,040	-
LAP-10 TP2 E P	19053083	18001730	Pump	Electric	10	1,250	450	6.25	T	680x742x1,040	-
LAP-10 TP2 HW V	19053085	18001731	Valve	Hot water	10	1,250	450	0.75	M	680x742x1,040	-
LAP-10 TP2 HW P	19053088	18001732	Pump	Hot water	10	1,250	450	0.75	M	680x742x1,040	-

(\*) **M:** SINGLE-PHASE model.  
Can be converted to:  
- 230 V III (Three-phase) (50-60 Hz).  
- 400 V III +N (Three-phase) (50-60 Hz).

**T:** THREE-PHASE model 230 V III / 400 V III +N (50-60 Hz).  
Can be converted to: 230 V I+N (Single-phase) (50-60 Hz).

## Options For Professional Washers LAP 8 - 10 Kg

Versions and options available to include in configurable codes "18".

Factory assembly for machines ordered with their configurable code.

OPTION	CODE	ABBREVIATION	DESCRIPTION	MODELS	€
ACCESSORIES	ZC_006_0013-0001	RD	REVERSIBLE DOOR	08 10	-
	ZC_006_0013-0003	UD	AUTOMATIC UNBLOCKAGE	08 10	-
	ZC_006_0013-0005	TR	TROPICALISED	08 10	-
	ZC_006_0013-0002	SG	SILICONE SEAL 8-14	08 10	-
	ZC_006_0013-0004	XD	EXTRA DOSAGE 8-10	08 10	-
	ZC_006_0013-0038	OC	Order in a complete container + Compact packing	08 10	-
MATERIAL	ZC_006_0015-0001	SSC	STAINLESS STEEL UNIT 8-10	08 10	-
DRAIN OPTIONS	ZC_006_0018-0001	NC	NC DRAIN NORMALLY CLOSED 8-10	08 V 10 V	-
	ZC_006_0018-0002	DD	DD DOUBLE DRAIN 8-10	08 V 10 V	-
	ZC_006_0018-0003	P	P DRAIN PUMP 8-10	08 10	-
VOLTAGE OPTIONS	ZC_006_0020-0001	400V 3N 50/60Hz	400V 3N 50/60Hz 08-11	08 E 10 E	-
	ZC_006_0020-0002	230V 3~ 50/60Hz	230V 3~ 50/60Hz 08-11	08 E 10 E	-
	ZC_006_0020-0003	230V 1N 50/60Hz	230V 1N 50/60Hz 08-11	08 10	-
	ZC_006_0020-0004	110V 1N 50/60Hz	110V 1N 50/60Hz 08-11	08 HW 10 HW	-
	ZC_006_0020-0005	440V 3~ (No N) 50/60 Hz	440V 3~ (No N) 50/60 Hz 08-10	08 10	-

## Kits For Professional Washer Extractors LAP 8 - 10 Kg

Kits available to incorporate into machines already manufactured.

CODE	KIT DESCRIPTION	MODELS	€
19044811	PLINTH KIT 8/10 SKINPLATE	08 10	-
19056125	PLINTH KIT MOPS 8/10 SKINPLATE	08 10	-
19056126	PLINTH KIT WATER RECOVERY SYSTEM 8/10 SKINPLATE	08 10	-
19056123	DRAIN PUMP KIT 8/10	08 10	-
19056122	DOUBLE DRAIN KIT 8/10 (Valve+Pump)	08 10	-
19034838	KIT 6 EXTRA SIGNALS FOR DOSING	08 10	-

## Specific Self-Service Options For Professional Washers LAP 8 - 10 Kg

Versions and options available to include in configurable codes "18".

Factory assembly for machines ordered with their configurable code.

OPTION	CODE	ABBREVIATION	DESCRIPTION	MODELS	€
MODE OF PAYMENT	ZC_006_0012-0001	CP	CP CONVERSION TO PAYMENT CENTRAL 8-10	08 10	-
	ZC_006_0012-0002	CT	CT ONLY TOKENS 8-10	08 10	-
	ZC_006_0012-0003	CA	CA (EUR-GBP) 8-10 EUROPE - UK	08 10	-
	ZC_006_0012-0004	CB	CB (USD-MXN-CAD) 8-10 USA - CANADA - MEXICO	08 10	-
	ZC_006_0012-0005	CC	CC (CNY-TWD-HKD) 8-10 CHINA - TAIWAN - HONG KONG	08 10	-
	ZC_006_0012-0006	CD	CD (TRY-PLN) 8-10 TURKEY - POLAND	08 10	-
	ZC_006_0012-0007	CE	CE (AUD-NZD-JPY) 8-10 AUSTRALIA - NEW ZEALAND - JAPAN	08 10	-
	ZC_006_0012-0008	CF	CF (RUB-ROB-CZK) 8-10 RUSSIA - ROMANIA - CZECH REPUBLIC	08 10	-
	ZC_006_0012-0009	CG	CG (MYR-SGD-IDR) I 8-10 MALAYSIA- SINGAPORE - INDONESIA	08 10	-
	ZC_006_0012-0010	CH	CH (MYR-SGD-IDR) II 8-10 MALAYSIA- SINGAPORE - INDONESIA	08 10	-
	ZC_006_0012-0011	CI	CI (ARS-CLP-BRL) 8-10 ARGENTINA - CHILE - BRAZIL	08 10	-
	ZC_006_0012-0012	CJ	CJ (VEF-PEN-COP) 8-10 VENEZUELA - PERU - COLOMBIA	08 10	-
	ZC_006_0012-0013	CK	CK (MAD-DZD-TND) 8-10 MOROCCO - ALGERIA - TUNISIA	08 10	-
	ZC_006_0012-0014	CL	CL (KRW-PHP-THB) 8-10 KOREA - PHILIPPINES - THAILAND	08 10	-
	ZC_006_0012-0015	CN	CN (EUR MECHANICAL) 8-10	08 10	-
COIN BOX	ZC_006_0014-0001	A	A COIN BOX A	08 10	-
	ZC_006_0014-0002	B	B COIN BOX B	08 10	-
	ZC_006_0014-0003	C	C COIN BOX C	08 10	-
	ZC_006_0014-0004	D	D COIN BOX D	08 10	-
	ZC_006_0014-0005	E	E COIN BOX E	08 10	-
	ZC_006_0014-0006	F	F COIN BOX F	08 10	-
	ZC_006_0014-0007	G	G COIN BOX G	08 10	-
	ZC_006_0014-0008	H	H COIN BOX H	08 10	-
	ZC_006_0014-0009	I	I COIN BOX I	08 10	-
	ZC_006_0014-0010	J	J COIN BOX J	08 10	-

## Specific Self-Service Kits For Professional Washers LAP 8 - 10 Kg

Kits available to incorporate into machines already manufactured.

CODE	KIT DESCRIPTION	SPECIFIC COUNTRIES	MODELS	€
19053384	COIN MECHANISM KIT EUR-GBP 8/10	EUROPE - UK	08 10	-
19053400	COIN MECHANISM KIT USD-MXN-CAD 8/10	USA - CANADA - MEXICO	08 10	-
19053401	COIN MECHANISM KIT CNY-TWD-HKD 8/10	CHINA - TAIWAN - HONG KONG	08 10	-
19053399	COIN MECHANISM KIT AUD-NZD-JPY 8/10	AUSTRALIA - NEW ZEALAND - JAPAN	08 10	-
19053397	COIN MECHANISM KIT TRY-PLN 8/10	TURKEY - POLAND	08 10	-
19053398	COIN MECHANISM KIT RUB-ROB-CZK 8/10	RUSSIA - ROMANIA - CZECH REPUBLIC	08 10	-
19053403	COIN MECHANISM KIT MYR-SGD-IDR I (0.5) 8/10	MALAYSIA- SINGAPORE - INDONESIA	08 10	-
19053405	COIN MECHANISM KIT ARS-CLP-BRL 8/10	ARGENTINA - CHILE - BRAZIL	08 10	-
19053406	COIN MECHANISM KIT VEF-PEN-COP 8/10	VENEZUELA - PERU - COLOMBIA	08 10	-
19053407	COIN MECHANISM KIT MAD-DZD-TND 8/10	MOROCCO - ALGERIA - TUNISIA	08 10	-
19053417	COIN MECHANISM KIT KRW-PHP-THB 8/10	KOREA - PHILIPPINES - THAILAND	08 10	-
19053411	MECHANICAL TOKENS COIN MECHANISM KIT 8/10		08 10	-
19057302	MECHANICAL COIN MECHANISM KIT EUR 8/10		08 10	-
19053431	PAY STATION KIT 8/10		08 10	-
19011224	100 TOKENS KIT		08 10	-
19045296	COIN BOX KIT (KEY A)		08 10	-
19045297	COIN BOX KIT (KEY B)		08 10	-
19045298	COIN BOX KIT (KEY C)		08 10	-
19045299	COIN BOX KIT (KEY D)		08 10	-
19045300	COIN BOX KIT (KEY E)		08 10	-
19045301	COIN BOX KIT (KEY F)		08 10	-
19045302	COIN BOX KIT (KEY G)		08 10	-
19045303	COIN BOX KIT (KEY H)		08 10	-
19045304	COIN BOX KIT (KEY I)		08 10	-
19045305	COIN BOX KIT (KEY J)		08 10	-

# Professional dryers



## General characteristics

- Professional dryers, 8 and 10 kg capacity.
  - Robust construction, panels in grey skin plate.
  - Industrial aluminium door with large diameter.
  - Versatile machine configurable for self-service.
  - Stackable on washer or dryer with the programmer at the bottom (between the two drums).
  - Wide draw filter, not in the door.
  - Electric heating with two possible configurations: 4.5 or 6.75 kW.
  - Easy access to components to facilitate maintenance.
  - Standard 400 V 3N voltage.  
Can be converted to: 230 V 1+N (Single-phase)
- Options:
- Versatile model convertible to self-service.
  - Option of stacking on top of the washer or another dryer, changing the control panel to the bottom.
  - Panels in AISI 304 stainless steel.
  - Plinth for better ergonomics.
  - Other voltages and frequencies: 110V, 60 Hz.

## Models

- STANDARD Code 19: Use this code for orders of machines that do not include any option or version other than standard. The retail price is the one indicated in the table.

- Code 18 WITH OPTIONS: Use this code for orders of machines which include any option or options from the table OPTIONS ON DEMAND.

- The retail price is calculated by adding the price increases for each option to the retail price of the standard code.

### ADVANCE

MODEL	CODE 19 (STANDARD)	CODE 18 (WITH OPTIONS)	CAPACITY KG	DRUM Ø X DEPTH (MM)	VOLUME LITRES	DOOR Ø (MM)	POWER (*)		DIMENSIONS (MM)	€
							KW	(V)		
SRP-08 TP2 E	19067973	18002318	8	590 x 585	160	588	7,17	T	680x722x1.040	-
SRP-10 TP2 E	19071954	18002320	10	590 x 720	200	588	7,17	T	680x775x1.040	-

(\*) T: Three-phase model 230 V III / 400 V III +N (50 Hz).  
Can be converted to: 230 V 1+N (Single-phase) (50-60 Hz).

### CONCEPT

MODEL	CODE 19 (STANDARD)	CODE 18 (WITH OPTIONS)	CAPACITY KG	DRUM Ø X DEPTH (MM)	VOLUME LITRES	DOOR Ø (MM)	POWER (*)		DIMENSIONS (MM)	€
							KW	(V)		
SRP-08 M E	19058764	18002316	8	590 x 585	160	588	7,17	T	680x722x1.040	-
SRP-10 M E	19069827	18002351	10	590 x 720	200	588	7,17	T	680x775x1.040	-

(\*) T: Three-phase model 230 V III / 400 V III +N (50 Hz).  
Can be converted to: 230 V 1+N (Single-phase) (50-60 Hz).

Options for professional dryers **SRP 8 - 10 kg**ADVANCE  CONCEPT

Versions and options available to include in configurable codes "18".

Factory assembly for machines ordered with their configurable code.

OPTION	CODE	ABBREVIATION	DESCRIPTION	MODELS				€
				ADVANCE		CONCEPT		
REVERSE OPENING DOOR	ZC_006_0001-0001	RD	Reverse opening door 160-660	08 TP2	10 TP2	08 M	10 M	-
MATERIAL	ZC_006_0002-0025	SSC	160/200 STAINLESS STEEL BODY	08 TP2	10 TP2	08 M	10 M	-
MOISTURE CONTROL	ZC_006_0005-0001	IMC	Control humedad inteligent	08 TP2	10 TP2			-
ACCESORIES	ZC_006_0031-0001	SSD	STAINLESS STEEL DRUM	08 TP2	10 TP2	08 M	10 M	-
	ZC_006_0032-0001	CU	CONTROL PANEL BELOW	08 TP2	10 TP2	08 M	10 M	-
	ZC_006_0035-0001	TR	Tropicalised TR	08 TP2	10 TP2			-
VOLTAGE OPTIONS	ZC_006_0008-0125	400V 3N / 230V 3~ / 230V 1N 60Hz	400V 3N / 230V 3~ / 230V 1N-60Hz160/200	08 TP2	10 TP2	08 M	10 M	-
	ZC_006_0008-0130	400V 3~ 60 Hz	400V 3~ 60 Hz 160/200	08 TP2	10 TP2	08 M	10 M	-
	ZC_006_0008-0135	460V 480V 3~ (No N) 60 Hz	460V 480V 3~ (No N) 60 Hz 160/2-MARINE - Barcos	08 TP2	10 TP2	08 M	10 M	-
CONTAINER PACKING	ZC_006_0013-0014	OC	Order in a complete container + Compact Packing	08 TP2	10 TP2	08 M	10 M	-

Kits for professional dryers **SRP 8 - 10 kg**

Kits available to incorporate into machines already assembled.

CODE	DESCRIPTION	MODELS		€
19044811	PLINTH KIT 8/10 SKIN PLATE	08	10	-
12227940	Programming console for M control	08 M	10 M	-

\* Check prices at the list of accessories and spare parts.

## Specific Self-Service Options For Professional Washers LAP 8 - 10 Kg

Versions and options available to include in configurable codes "18".

Factory assembly for machines ordered with their configurable code.

OPTION	CODE	ABBREVIATION	DESCRIPTION	MODELS	€
MODE OF PAYMENT	ZC_006_0012-0001	CP	CP CONVERSION TO PAYMENT CENTRAL 8-10	08 10	-
	ZC_006_0012-0002	CT	CT ONLY TOKENS 8-10	08 10	-
	ZC_006_0012-0003	CA	CA (EUR-GBP) 8-10 EUROPE - UK	08 10	-
	ZC_006_0012-0004	CB	CB (USD-MXN-CAD) 8-10 USA - CANADA - MEXICO	08 10	-
	ZC_006_0012-0005	CC	CC (CNY-TWD-HKD) 8-10 CHINA - TAIWAN - HONG KONG	08 10	-
	ZC_006_0012-0006	CD	CD (TRY-PLN) 8-10 TURKEY - POLAND	08 10	-
	ZC_006_0012-0007	CE	CE (AUD-NZD-JPY) 8-10 AUSTRALIA - NEW ZEALAND - JAPAN	08 10	-
	ZC_006_0012-0008	CF	CF (RUB-ROB-CZK) 8-10 RUSSIA - ROMANIA - CZECH REPUBLIC	08 10	-
	ZC_006_0012-0009	CG	CG (MYR-SGD-IDR) I 8-10 MALAYSIA- SINGAPORE - INDONESIA	08 10	-
	ZC_006_0012-0010	CH	CH (MYR-SGD-IDR) II 8-10 MALAYSIA- SINGAPORE - INDONESIA	08 10	-
	ZC_006_0012-0011	CI	CI (ARS-CLP-BRL) 8-10 ARGENTINA - CHILE - BRAZIL	08 10	-
	ZC_006_0012-0012	CJ	CJ (VEF-PEN-COP) 8-10 VENEZUELA - PERU - COLOMBIA	08 10	-
	ZC_006_0012-0013	CK	CK (MAD-DZD-TND) 8-10 MOROCCO - ALGERIA - TUSINIA	08 10	-
	ZC_006_0012-0014	CL	CL (KRW-PHP-THB) 8-10 KOREA - PHILIPPINES - THAILAND	08 10	-
	ZC_006_0012-0015	CN	CN (EUR MECHANICAL) 8-10	08 10	-
COIN BOX	ZC_006_0014-0001	A	A COIN BOX A	08 10	-
	ZC_006_0014-0002	B	B COIN BOX B	08 10	-
	ZC_006_0014-0003	C	C COIN BOX C	08 10	-
	ZC_006_0014-0004	D	D COIN BOX D	08 10	-
	ZC_006_0014-0005	E	E COIN BOX E	08 10	-
	ZC_006_0014-0006	F	F COIN BOX F	08 10	-
	ZC_006_0014-0007	G	G COIN BOX G	08 10	-
	ZC_006_0014-0008	H	H COIN BOX H	08 10	-
	ZC_006_0014-0009	I	I COIN BOX I	08 10	-
	ZC_006_0014-0010	J	J COIN BOX J	08 10	-

## Specific Self-Service Kits For Professional Washers LAP 8 - 10 Kg

Kits available to incorporate into machines already manufactured.

CODE	KIT DESCRIPTION	SPECIFIC COUNTRIES	€
19053384	COIN MECHANISM KIT EUR-GBP 8/10	EUROPE - UK	08 10 -
19053400	COIN MECHANISM KIT USD-MXN-CAD 8/10	USA - CANADA - MEXICO	08 10 -
19053401	COIN MECHANISM KIT CNY-TWD-HKD 8/10	CHINA - TAIWAN - HONG KONG	08 10 -
19053399	COIN MECHANISM KIT AUD-NZD-JPY 8/10	AUSTRALIA - NEW ZEALAND - JAPAN	08 10 -
19053397	COIN MECHANISM KIT TRY-PLN 8/10	TURKEY - POLAND	08 10 -
19053398	COIN MECHANISM KIT RUB-ROB-CZK 8/10	RUSSIA - ROMANIA - CZECH REPUBLIC	08 10 -
19053403	COIN MECHANISM KIT MYR-SGD-IDR I (0.5) 8/10	MALAYSIA- SINGAPORE - INDONESIA	08 10 -
19053405	COIN MECHANISM KIT ARS-CLP-BRL 8/10	ARGENTINA - CHILE - BRAZIL	08 10 -
19053406	COIN MECHANISM KIT VEF-PEN-COP 8/10	VENEZUELA - PERU - COLOMBIA	08 10 -
19053407	COIN MECHANISM KIT MAD-DZD-TND 8/10	MOROCCO - ALGERIA - TUSINIA	08 10 -
19053417	COIN MECHANISM KIT KRW-PHP-THB 8/10	KOREA - PHILIPPINES - THAILAND	08 10 -
19053411	MECHANICAL TOKENS COIN MECHANISM KIT 8/10		08 10 -
19057302	MECHANICAL COIN MECHANISM KIT EUR 8/10		08 10 -
19053431	PAY STATION KIT 8/10		08 10 -
19011224	100 TOKENS KIT		08 10 -
19045296	COIN BOX KIT (KEY A)		08 10 -
19045297	COIN BOX KIT (KEY B)		08 10 -
19045298	COIN BOX KIT (KEY C)		08 10 -
19045299	COIN BOX KIT (KEY D)		08 10 -
19045300	COIN BOX KIT (KEY E)		08 10 -
19045301	COIN BOX KIT (KEY F)		08 10 -
19045302	COIN BOX KIT (KEY G)		08 10 -
19045303	COIN BOX KIT (KEY H)		08 10 -
19045304	COIN BOX KIT (KEY I)		08 10 -
19045305	COIN BOX KIT (KEY J)		08 10 -





# Washers

High Spin .....	226
Fast Spin .....	230
Normal Spin.....	234

Special models or any other variant on the standard model are to be assembled in factory, and carry a supplement over the price indicated for the standard model.

Please consult Fagor Industrial for any other variant or option not reflected on this list.

# Self-service washers

The FAGOR INDUSTRIAL washers have been specially designed for use in self-service laundrettes.

Available both for LA soft-mounted machines and hard-mounted LR and LN machines. These machines can be easily converted from OPL to Self-service and vice versa from the same Touch Plus Control.



**High spin speed  
(LA)**



**Fast spin speed  
(LR)**



**Normal spin speed  
(LN)**

# A solution for every customer

FAGOR INDUSTRIAL adapts to each user's needs, offering a wide range of options.

## High spin | **G-Force: 450**

TYPE OF CONTROL	HEATING	CAPACITY				
		10-11 KG	13-14 KG	18-20 KG	25-28 KG	35-39 KG
Touch Plus Control (TP2) Self-service	Electric and hot water	LA-11 TP2	LA-14 TP2	LA-18 TP2	LA-25 TP2	LA-35 TP2

## Fast spin | **G-Force: 300**

TYPE OF CONTROL	HEATING	CAPACITY			
		10-11 KG	13-14 KG	18-20 KG	25-28 KG
Touch Plus Control (TP2) Self-service	Electric and hot water	LR-11 TP2	LR-14 TP2	LR-18 TP2	LR-25 TP2

## Normal spin | **G-Force: 200** (LN-60 G-FACTOR: 150)

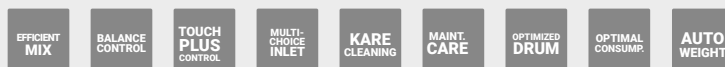
TYPE OF CONTROL	HEATING	CAPACITY					
		10-11 KG	13-14 KG	18-20 KG	25-28 KG	35-39 KG	60-66 KG
Touch Plus Control (TP2) Self-service	Electric and hot water	LN-11 TP2	LN-14 TP2	LN-18 TP2	LN-25 TP2	LN-35 TP2	LN-60 TP2

# High spin

G Force = 450



LA-14-TP2



01.

Especially designed for those laundries where the quality of the process and energy and water saving are a priority. The new high-spin washer extractors offer top performance and a renovated look to meet the needs of the most demanding customers.

02.

Their advanced design and technology, together with their wide range of options and accessories, have a great effect on energy efficiency and on water and chemicals saving, reducing production costs and increasing the productivity of your business.

03.

This type of high-spin washer extractor (G-Force: 350 to 450) drastically reduce the residual moisture after the washing process, thus allowing important savings in the processes that follow such as drying and ironing.

04.

Their quick and simple installation and the minimum space required for use and maintenance are a key advantage compared to other ranges.

# High spin

**G Force = 450 | 11 - 14 - 18 - 25 - 35 Kg**



LA-18-TP2

## General characteristics

- Drum and jacket in AISI-304 stainless steel.
- Unit exterior manufactured in skin plate, colour grey, stainless steel appearance.
- Tank with 4 detergent compartments.
- 8 signals for automatic liquid dosing, programmable in time and delay. 6 extra signals available optionally.
- 3 standard water inlets.
- Variable-frequency drive (standard 50-60 Hz). Balancing system controlled by the same drive.
- New second-generation TOUCH PLUS programmer with 7" touch screen, 37 available languages and which lets you create an indefinite number of programs (29 pre-set).
- Traceability as standard: the whole wash process (temperatures, water levels) is stored on the washer and is extractable to a PC by USB memory.
- Allows programming, importing and exporting of programs and software updates via USB.
- Wet Cleaning characteristics included in the scheduler (modifiable water levels and washing speed).
- Intelligent weighing system or manual load indication system to optimise water and detergent consumption at lower loads.
- "LOADING AID" system, water inlet and spin control to load the linen.
- The standard model can be converted to self-service by installing a pay station kit, coin mechanism kit or other payment system. RS-485 communication.
- Washers compatible with water recovery tanks.
- CE, WRAS and EAC product certifications. ETL certified optional version of the machine.

MODEL	CODE (*)		CAPACITY KG		DRUM		DOOR	SPIN		HEATING		VOLT	ELEC. POWER	DIMENSIONS		€
	STANDARD	CONFIGURABLE	(1:9)	(1:10)	Ø X DEPTH	LITRES	Ø	R.P.M.	G	TYPE	POWER	(**)	MAX - KW	MM		
LA-11 TP2 E	19058423	18001864	11	10	532x425	100	373	1,231	450	E	6 kW	T	6,25	692x788x1,185		-
LA-11 TP2 HW	19061870	18001980	11	10	532x425	100	373	1,231	450	HW		M	0,75	692x788x1,185		-
LA-14 TP2 E	19058420	18001863	14	13	620x430	130	373	1,138	450	E	9 kW	T	9,50	788x869x1,307		-
LA-14 TP2 HW	19061872	18001978	14	13	620x430	130	373	1,138	450	HW		M	1,50	788x869x1,307		-
LA-18 TP2 E	19058399	18001856	20	18	700x470	180	460	1,071	450	E	12 kW	T	12,75	884x913x1,415		-
LA-18 TP2 HW	19058409	18001860	20	18	700x470	180	460	1,071	450	HW		M	2,20	884x913x1,415		-
LA-25 TP2 E	19058413	18001862	28	25	770x530	250	460	1,024	450	E	18 kW	V	19,00	979x1,041x1,553		-
LA-25 TP2 HW	19061874	18001976	28	25	770x530	250	460	1,024	450	HW		M	3,00	979x1,041x1,553		-
LA-35 TP2 E	19058449	18001868	39	35	860x602	350	560	966	450	E	21 kW	X	22,00	1,095x1,184x1,598		-
LA-35 TP2 HW	19061876	18001974	39	35	860x602	350	560	966	450	HW		X	4,00	1,095x1,184x1,598		-

(\*) : STANDARD Code: Use this code for orders of machines which do not include any option or version different to standard. The retail price is the one shown in the table.  
 Code WITH OPTIONS: Use this code for orders of machines which include any option or options from the table OPTIONS FOR WASHERS. The retail price is calculated by adding the price increases for each option to the retail price of the standard code

### Heating systems in models 11 - 14 - 18 - 25 - 35

E: Electric heating system.  
 Heated by means of stainless steel armoured heating elements.  
 HW: Hot Water inlet. Wash with hot water from the network.

### (\*\*) Standard voltages in 11 - 14 - 18 - 25 - 35

M: SINGLE-PHASE model. Convertible to: - 230 V 3 ~ (Three-phase)  
 - 400 V 3N (Three-phase)  
 T: THREE-PHASE model 400 V 3N / 230 V 3 ~. Convertible to: - 230 V 1N (Single-phase)  
 V: 400 V 3N model. Convertible to: - 230 V 3 ~  
 X: MODEL 400 V 3N. Upon request: - 230 V 3 ~

## Options for washer extractors LA 11 - 14 - 18 - 25 - 35 kg

Versions and options available to include in configurable codes "18".

Factory assembly for machines ordered with their configurable code.

OPTION	CODE	ABBREVIATION	DESCRIPTION	MODELS					€
ACCESSORIES	ZC_006_0013-0001	RD	REVERSIBLE DOOR	11	14	18	25	35	-
	ZC_006_0013-0003	UD	AUTOMATIC UNBLOCKAGE	11	14	18	25	35	-
	ZC_006_0013-0005	TR	TROPICALISED	11	14	18	25	35	-
	ZC_006_0013-0008	LG	LEVELLING FEET	11	14	18	25	35	-
	ZC_006_0013-0010	PR	PRINTER	11	14	18	25	35	-
	ZC_006_0013-0012	TK	100 TOKENS	11	14	18	25	35	-
	ZC_006_0013-0013	RC	RECIRCULATION A-11	11					-
	ZC_006_0013-0015	RC	RECIRCULATION A-14		14				-
	ZC_006_0013-0017	RC	RECIRCULATION A-18			18			-
	ZC_006_0013-0019	RC	RECIRCULATION A-25				25		-
	ZC_006_0013-0021	RC	RECIRCULATION A-35					35	-
	ZC_006_0013-0002	SG	SILICONE SEAL 8-14	11	14				-
	ZC_006_0013-0032	SG	SILICONE SEAL 18-25			18	25		-
	ZC_006_0013-0035	XD	EXTRA DOSAGE 11-35	11	14	18	25	35	-
	EXTERNAL CASE	ZC_006_0018-0007	WS	AUTOMATIC WEIGHING 11-35	11	14	18	25	35
ZC_006_0015-0005		SSC	SSC STAINLESS STEEL UNIT A-11	11					-
ZC_006_0015-0006		SSF	SSC STAINLESS STEEL FRONT A-11	11					-
ZC_006_0015-0009		SSC	SSC STAINLESS STEEL UNIT A-14		14				-
ZC_006_0015-0010		SSF	SSC STAINLESS STEEL FRONT A-14		14				-
ZC_006_0015-0013		SSC	SSC STAINLESS STEEL UNIT A-18			18			-
ZC_006_0015-0014		SSF	SSC STAINLESS STEEL FRONT A-18			18			-
ZC_006_0015-0017		SSC	SSC STAINLESS STEEL UNIT A-25				25		-
ZC_006_0015-0018		SSF	SSC STAINLESS STEEL FRONT A-25				25		-
ZC_006_0015-0021		SSC	SSC STAINLESS STEEL UNIT A-35					35	-
DRAIN OPTIONS	ZC_006_0018-0005	NC	NC DRAIN NORMALLY CLOSED A-11	11					-
	ZC_006_0018-0007	P	P PUMP A-11/14	11	14				-
	ZC_006_0018-0013	NC	NC DRAIN NORMALLY CLOSED A-14		14				-
	ZC_006_0018-0014	DD	DD DOUBLE DRAIN A-14/18		14	18			-
	ZC_006_0018-0021	NC	NC DRAIN NORMALLY CLOSED A-18			18			-
	ZC_006_0018-0029	NC	NC DRAIN NORMALLY CLOSED A-25				25		-
	ZC_006_0018-0030	DD	DD DOUBLE DRAIN A-25				25		-
	ZC_006_0018-0037	NC	NC DRAIN NORMALLY CLOSED A-35					35	-
	ZC_006_0018-0038	DD	DD DOUBLE DRAIN A-35					35	-
	ZC_006_0012-0016	CP	CP PAYMENT CENTRAL CONNECTION 11-35	11	14	18	25	35	-
MODE OF PAYMENT	ZC_006_0012-0017	CT	CT ONLY TOKENS 11-35	11	14	18	25	35	-
	ZC_006_0012-0018	CA	CA (EUR-GBP) 11-35	EUROPE-UK	14	18	25	35	-
	ZC_006_0012-0019	CB	CB (USD-MXN-CAD) 11-35	11	14	18	25	35	-
	ZC_006_0012-0020	CC	CC (CNY-TWD-HKD) 11-35	11	14	18	25	35	-
	ZC_006_0012-0021	CD	CD (TRY-PLN) 11-35	11	14	18	25	35	-
	ZC_006_0012-0022	CE	CE (AUD-NZD-JPY) 11-35	11	14	18	25	35	-
	ZC_006_0012-0023	CF	CF (RUB-ROB-CZK) 11-35	11	14	18	25	35	-
	ZC_006_0012-0024	CG	CG (MYR-SGD-IDR) I 11-35	11	14	18	25	35	-
	ZC_006_0012-0025	CH	CH (MYR-SGD-IDR) II 11-35	11	14	18	25	35	-
	ZC_006_0012-0026	CI	CI (ARS-CLP-BRL) 11-35	11	14	18	25	35	-
	ZC_006_0012-0027	CJ	CJ (VEF-PEN-COP) 11-35	11	14	18	25	35	-
	ZC_006_0012-0028	CK	CK (MAD-DZD-TND) 11-35	11	14	18	25	35	-
	ZC_006_0012-0029	CL	CL (KRW-PHP-THB) 11-35	11	14	18	25	35	-
	ZC_006_0012-0030	CN	CN (EUR MECHANICAL) 11-35	11	14	18	25	35	-
	COIN BOX	ZC_006_0014-0001	A	A COIN BOX A	11	14	18	25	35
ZC_006_0014-0002		B	B COIN BOX B	11	14	18	25	35	-
ZC_006_0014-0003		C	C COIN BOX C	11	14	18	25	35	-
ZC_006_0014-0004		D	D COIN BOX D	11	14	18	25	35	-
ZC_006_0014-0005		E	E COIN BOX E	11	14	18	25	35	-
ZC_006_0014-0006		F	F COIN BOX F	11	14	18	25	35	-
ZC_006_0014-0007		G	G COIN BOX G	11	14	18	25	35	-
ZC_006_0014-0008		H	H COIN BOX H	11	14	18	25	35	-
ZC_006_0014-0009		I	I COIN BOX I	11	14	18	25	35	-
ZC_006_0014-0010		J	J COIN BOX J	11	14	18	25	35	-
VOLTAGE OPTIONS	ZC_006_0020-0001	400V 3N 50/60Hz	400V 3N 50/60Hz 08-11	11					-
	ZC_006_0020-0002	230V 3~ 50/60Hz	230V 3~ 50/60Hz 08-11	11					-
	ZC_006_0020-0003	230V 1N 50/60Hz	230V 1N 50/60Hz 08-11	11					-
	ZC_006_0020-0005	440V 3~ (No N) 50/60 Hz	440V 3~ (No N) 50/60 Hz 08-11	11					-
	ZC_006_0020-0006	400V 3N 50/60Hz	400V 3N 50/60Hz 14		14				-
	ZC_006_0020-0007	230V 3~ 50/60Hz	230V 3~ 50/60Hz 14		14				-
	ZC_006_0020-0008	230V 1N 50/60Hz	230V 1N 50/60Hz 14		14				-
	ZC_006_0020-0009	440V 3~ (No N) 50/60 Hz	440V 3~ (No N) 50/60 Hz 14		14				-
	ZC_006_0020-0010	400V 3N 50/60Hz	400V 3N 50/60Hz 18			18			-
	ZC_006_0020-0011	230V 3~ 50/60Hz	230V 3~ 50/60Hz 18			18			-
	ZC_006_0020-0012	230V 1N 50/60Hz	230V 1N 50/60Hz 18			18			-
	ZC_006_0020-0013	440V 3~ (No N) 50/60 Hz	440V 3~ (No N) 50/60 Hz 18			18			-
	ZC_006_0020-0014	400V 3N 50/60Hz	400V 3N 50/60Hz 25				25		-
	ZC_006_0020-0015	230V 3~ 50/60Hz	230V 3~ 50/60Hz 25				25		-
	ZC_006_0020-0016	230V 1N 50/60Hz	230V 1N 50/60Hz 25				25		-
	ZC_006_0020-0017	440V 3~ (No N) 50/60 Hz	440V 3~ (No N) 50/60 Hz 25				25		-
	ZC_006_0020-0018	400V 3N 50/60Hz	400V 3N 50/60Hz 35					35	-
	ZC_006_0020-0019	230V 3~ 50/60Hz	230V 3~ 50/60Hz 35					35	-
	ZC_006_0020-0020	230V 1N 50/60Hz	230V 1N 50/60Hz 35					35	-
	ZC_006_0020-0021	440V 3~ (No N) 50/60 Hz	440V 3~ (No N) 50/60 Hz 35					35	-

## Kits for washer extractors LA 11 - 14 - 18 - 25 - 35 kg

Kits available to incorporate into machines already manufactured.

CODE	KIT DESCRIPTION		MODELS					€
19060839	PLINTH KIT COIN H-11 SKIN PLATE		11					-
19060836	PLINTH KIT COIN H-14 SKIN PLATE			14				-
19060837	PLINTH KIT COIN H-18 SKIN PLATE				18			-
19060838	PLINTH KIT COIN H-25 SKIN PLATE					25		-
19056154	PLINTH KIT COIN H-11 STAINLESS STEEL	To align the height of different models	11					-
19005336	PLINTH KIT COIN H-14 STAINLESS STEEL			14				-
19005061	PLINTH KIT COIN H-18 STAINLESS STEEL				18			-
19004974	PLINTH KIT COIN H-25 STAINLESS STEEL					25		-
19060842	PLINTH KIT DOOR H-11 SKIN PLATE		11					-
19060843	PLINTH KIT DOOR H-14 SKIN PLATE			14				-
19060844	PLINTH KIT DOOR H-18 SKIN PLATE				18			-
19060845	PLINTH KIT DOOR H-25 SKIN PLATE					25		-
19060846	PLINTH KIT DOOR H-35 SKIN PLATE						35	-
19035700	PLINTH KIT DOOR H-11 STAINLESS STEEL	To align the base of the doors	11					-
19035701	PLINTH KIT DOOR H-14 STAINLESS STEEL			14				-
19035702	PLINTH KIT DOOR H-18 STAINLESS STEEL				18			-
19035703	PLINTH KIT DOOR H-25 STAINLESS STEEL					25		-
19034836	PLINTH KIT DOOR H-35 STAINLESS STEEL						35	-
19038354	DOUBLE DRAIN KIT 3" (external)	Recommended for LA-11 machines	11	14	18	25	35	-
19030318	DOUBLE DRAIN KIT 3" H-13/18			14	18			-
19030388	DOUBLE DRAIN KIT 3" H-25					25		-
19036861	DOUBLE DRAIN KIT H-35						35	-
19057411	DRAIN PUMP KIT H-11/14		11	14				-
19067223	Water recirculation KIT H-11/25		11	14	18	25		-
19067224	Water recirculation KIT H-35						35	-
19034838	EXTRA DOSAGE KIT	6 extra signals for dosing	11	14	18	25	35	-
19068044	WASHER PRINTER KIT		11	14	18	25	35	-
19004570	STEAM KIT N/R/H-11/14/18		11	14	18			-
19004571	STEAM KIT N/R/H-25	To convert an E or HW machine to Steam version (S)				25		-
19035743	STEAM KIT H-35						35	-
19004482	FEET KIT WASHERS H-11/14/18/25/35		11	14	18	25	35	-
19035704	AUTOMATIC WEIGHING KIT H-11/14/18/25/35	Includes the EXTRA DOSAGE kit	11	14	18	25	35	-
SPECIFIC SELF-SERVICE KITS								
19011224	KIT 100 TOKENS		11	14	18	25	35	-
19035771	AUTOMATIC UNBLOCKAGE KIT		11	14	18	25	35	-
19045296	COIN BOX KIT (KEY A)		11	14	18	25	35	-
19045297	COIN BOX KIT (KEY B)		11	14	18	25	35	-
19045298	COIN BOX KIT (KEY C)		11	14	18	25	35	-
19045299	COIN BOX KIT (KEY D)		11	14	18	25	35	-
19045300	COIN BOX KIT (KEY E)		11	14	18	25	35	-
19045301	COIN BOX KIT (KEY F)		11	14	18	25	35	-
19045302	COIN BOX KIT (KEY G)		11	14	18	25	35	-
19045303	COIN BOX KIT (KEY H)		11	14	18	25	35	-
19045304	COIN BOX KIT (KEY I)		11	14	18	25	35	-
19045305	COIN BOX KIT (KEY J)		11	14	18	25	35	-
19059022	BLACK COIN MECHANISM KIT EUR+GBP			14	18	25	35	-
19059023	BLACK COIN MECHANISM KIT USA+MEX+CAN		11	14	18	25	35	-
19059024	BLACK COIN MECHANISM KIT CNY-TWD-HKD		11	14	18	25	35	-
19059026	BLACK COIN MECHANISM KIT TRY-PLN		11	14	18	25	35	-
19059025	BLACK COIN MECHANISM KIT AUD-NZD-JPY		11	14	18	25	35	-
19059027	BLACK COIN MECHANISM KIT RUB-ROB-CZK		11	14	18	25	35	-
19059028	BLACK COIN MECHANISM KIT MYR-SGD-IDR I (0.5)		11	14	18	25	35	-
19059033	BLACK COIN MECHANISM KIT MYR-SGD-IDR II (0.1-0.2-0.5)		11	14	18	25	35	-
19059029	BLACK COIN MECHANISM KIT ARS-CLP-BRL		11	14	18	25	35	-
19059030	BLACK COIN MECHANISM KIT VEF-PEN-COP		11	14	18	25	35	-
19059031	BLACK COIN MECHANISM KIT MAD-DZD-TND		11	14	18	25	35	-
19059032	BLACK COIN MECHANISM KIT KRW-PHP-THB		11	14	18	25	35	-
19059034	BLACK COIN MECHANISM KIT MECHANICAL TOKENS		11	14	18	25	35	-
19059035	BLACK COIN MECHANISM KIT MECHANICAL EUR		11	14	18	25	35	-
19059735	CONVERSION TO PAYMENT CENTRAL KIT		11	14	18	25	35	-



# Fast spin

G Force = 300



LR-25-TP2

- EFFICIENT MIX
- BALANCE CONTROL
- TOUCH PLUS CONTROL
- MULTI-CHOICE INLET
- KARE CLEANING
- MAINT. CARE
- OPTIMIZED DRUM
- OPTIMAL CONSUMP.

01.

Designed for those professionals who need a machine with top performance and a competitive price, or who need a hard-mounted machine, like self-service laundrettes or ships.

02.

The FAGOR INDUSTRIAL fast-spin washer extractors (G force = 300) stand out for their high levels of water extraction, low noise level and vibration-free operation.

03.

These high-performance models allow a minimum energy cost with the help of intelligent programming and control of imbalance through the variable frequency drive. Their strong tubular construction and long-lasting components make these machines of the utmost reliability.

# Fast spin

Hard-Mounted Machines | **G Force = 300** | 11 - 14 - 18 - 25 Kg



LR-18 TP2

## General characteristics

- Drum and jacket in AISI-304 stainless steel.
- Unit exterior manufactured in skin plate, colour grey, stainless steel appearance.
- Tank with 4 detergent compartments.
- 8 signals for automatic liquid dosing, programmable in time and delay. 6 extra signals available optionally.
- 3 standard water inlets.
- Variable-frequency drive (standard 50-60 Hz). Balancing system controlled by the same drive.
- New second-generation TOUCH PLUS programmer with 7" touch screen, 37 available languages and which lets you create an indefinite number of programs (29 pre-set).
- Allows programming, importing and exporting of programs and software updates via USB.
- Standard traceability: the whole wash process (temperatures, water levels) is stored in the washer and extractable to a PC by USB memory.
- Wet Cleaning characteristics included in the programmer (modifiable water levels and washing speed).
- Intelligent weighing system or manual load indication system to optimise water and detergent consumption at lower loads.
- "LOADING AID" system, water inlet and spin control to load the linen.
- The standard model can be converted to self-service by installing a pay station kit, coin mechanism kit or other payment system. RS-485 communication.
- Washers compatible with water recovery tanks.
- CE, WRAS and EAC product certifications. ETL certified optional version of the machine.

### ANCHORAGE TO THE FLOOR

- These machines need to be anchored to the floor.
- FAGOR offers anchoring bases specific to each model, which must be ordered separately (see table of optional kits).
- The price of the machine does not include the anchoring base.

MODEL	CODE (*)		CAPACITY KG		DRUM		DOOR		SPIN		HEATING		VOLT (**)	ELEC. POWER MAX - KW	DIMENSIONS MM		€
	STANDARD	CONFIGURABLE	(1:9)	(1:10)	Ø X DEPTH	LITRES	Ø	R.P.M.	G	TYPE	POWER	MM					
LR-11 TP2 E	19058453	18001870	11	10	620x330	100	373	929	300	E	6 kW	T	6.25	719x684x1,158	-		
LR-11 TP2 HW	19061859	18001990	11	10	620x330	100	373	929	300	HW		M	1.10	719x684x1,158	-		
LR-14 TP2 E	19058444	18001867	14	13	620x430	130	373	929	300	E	9 kW	T	9.50	719x830x1,158	-		
LR-14 TP2 HW	19061861	18001988	14	13	620x430	130	373	929	300	HW		M	1.10	719x830x1,158	-		
LR-18 TP2 E	19058442	18001866	20	18	620x600	180	460	874	300	E	12 kW	T	12.75	788x840x1,307	-		
LR-18 TP2 HW	19061864	18001986	20	18	620x600	180	460	874	300	HW		M	2.20	788x840x1,307	-		
LR-25 TP2 E	19058429	18001865	28	25	770x530	250	460	836	300	E	18 kW	V	19.00	884x1,011x1,340	-		
LR-25 TP2 HW	19061866	18001984	28	25	770x530	250	460	836	300	HW		M	3.00	884x1,011x1,340	-		

(\*) : STANDARD Code: Use this code for orders of machines which do not include any option or version different to standard. The retail price is the one shown in the table.  
 Code WITH OPTIONS: Use this code for orders of machines which include any option or options from the table OPTIONS FOR WASHERS. The retail price is calculated by adding the price increases for each option to the retail price of the standard code

### Heating systems in models 11 - 14 - 18 - 25

E : Electric heating system. Heated by means of stainless steel armoured heating elements.  
 HW : Hot Water inlet. Wash with hot water from the network.

### (\*\*) Standard voltages in 11 - 14 - 18 - 25

M: SINGLE-PHASE model.  
 T: THREE-PHASE model 400 V 3N / 230 V 3 ~.  
 V: 400 V 3N model.

Convertible to: - 230 V 3 ~ (Three-phase)  
 - 400 V 3N (Three-phase)  
 Convertible to: - 230 V 1N (Single-phase)  
 Convertible to: - 230 V 3 ~

## Options For Washer Extractors LR 11 - 14 - 18 - 25 Kg

Versions and options available to include in configurable codes "18".

Factory assembly for machines ordered with their configurable code.

OPTION	CODE	ABBREVIATION	DESCRIPTION	MODELS	€
ACCESSORIES	ZC_006_0013-0001	RD	REVERSIBLE DOOR	11 14 18 25	-
	ZC_006_0013-0003	UD	AUTOMATIC UNBLOCKAGE	11 14 18 25	-
	ZC_006_0013-0005	TR	TROPICALISED	11 14 18 25	-
	ZC_006_0013-0010	PR	PRINTER	11 14 18 25	-
	ZC_006_0013-0012	TK	100 TOKENS	11 14 18 25	-
	ZC_006_0013-0014	RC	RECIRCULATION N/R-11	11	-
	ZC_006_0013-0016	RC	RECIRCULATION N/R-14	14	-
	ZC_006_0013-0018	RC	RECIRCULATION N/R-18	18	-
	ZC_006_0013-0020	RC	RECIRCULATION N/R-25	25	-
	ZC_006_0013-0002	SG	SILICONE SEAL 8-14	11 14	-
ZC_006_0013-0032	SG	SILICONE SEAL 18-25	18 25	-	
ZC_006_0013-0035	XD	EXTRA DOSAGE 11-35	11 14 18 25	-	
EXTERNAL CASE	ZC_006_0015-0003	SSC	SSC STAINLESS STEEL UNIT N/R-11	11	-
	ZC_006_0015-0004	SSF	SSC STAINLESS STEEL FRONT N/R-11	11	-
	ZC_006_0015-0007	SSC	SSC STAINLESS STEEL UNIT N/R-14	14	-
	ZC_006_0015-0008	SSF	SSC STAINLESS STEEL FRONT N/R-14	14	-
	ZC_006_0015-0011	SSC	SSC STAINLESS STEEL UNIT N/R-18	18	-
	ZC_006_0015-0012	SSF	SSC STAINLESS STEEL FRONT N/R-18	18	-
	ZC_006_0015-0015	SSC	SSC STAINLESS STEEL UNIT N/R-25	25	-
ZC_006_0015-0016	SSF	SSC STAINLESS STEEL FRONT N/R-25	25	-	
DRAIN OPTIONS	ZC_006_0018-0009	NC	NC DRAIN NORMALLY CLOSED N/R-11	11	-
	ZC_006_0018-0017	NC	NC DRAIN NORMALLY CLOSED N/R-14	14	-
	ZC_006_0018-0025	NC	NC DRAIN NORMALLY CLOSED N/R-18	18	-
	ZC_006_0018-0033	NC	NC DRAIN NORMALLY CLOSED N/R-25	25	-
ZC_006_0018-0026	DD	DD DOUBLE DRAIN N/R-18/25/35	18 25	-	
MODE OF PAYMENT (COIN MECHANISM)	ZC_006_0012-0016	CP	CP CONVERSION TO PAYMENT CENTRAL 11-35	11 14 18 25	-
	ZC_006_0012-0017	CT	CT ONLY TOKENS 11-35	11 14 18 25	-
	ZC_006_0012-0018	CA	CA (EUR-GBP) 11-35	EUROPE-UK 14 18 25	-
	ZC_006_0012-0019	CB	CB (USD-MXN-CAD) 11-35	11 14 18 25	-
	ZC_006_0012-0020	CC	CC (CNY-TWD-HKD) 11-35	11 14 18 25	-
	ZC_006_0012-0021	CD	CD (TRY-PLN) 11-35	11 14 18 25	-
	ZC_006_0012-0022	CE	CE (AUD-NZD-JPY) 11-35	11 14 18 25	-
	ZC_006_0012-0023	CF	CF (RUB-ROB-CZK) 11-35	11 14 18 25	-
	ZC_006_0012-0024	CG	CG (MYR-SGD-IDR) I 11-35	11 14 18 25	-
	ZC_006_0012-0025	CH	CH (MYR-SGD-IDR) II 11-35	11 14 18 25	-
	ZC_006_0012-0026	CI	CI (ARS-CLP-BRL) 11-35	11 14 18 25	-
	ZC_006_0012-0027	CJ	CJ (VEF-PEN-COP) 11-35	11 14 18 25	-
	ZC_006_0012-0028	CK	CK (MAD-DZD-TND) 11-35	11 14 18 25	-
	ZC_006_0012-0029	CL	CL (KRW-PHP-THB) 11-35	11 14 18 25	-
ZC_006_0012-0030	CN	CN (EUR MECHANICAL) 11-35	11 14 18 25	-	
COIN BOX	ZC_006_0014-0001	A	A COIN BOX A	11 14 18 25	-
	ZC_006_0014-0002	B	B COIN BOX B	11 14 18 25	-
	ZC_006_0014-0003	C	C COIN BOX C	11 14 18 25	-
	ZC_006_0014-0004	D	D COIN BOX D	11 14 18 25	-
	ZC_006_0014-0005	E	E COIN BOX E	11 14 18 25	-
	ZC_006_0014-0006	F	F COIN BOX F	11 14 18 25	-
	ZC_006_0014-0007	G	G COIN BOX G	11 14 18 25	-
	ZC_006_0014-0008	H	H COIN BOX H	11 14 18 25	-
	ZC_006_0014-0009	I	I COIN BOX I	11 14 18 25	-
	ZC_006_0014-0010	J	J COIN BOX J	11 14 18 25	-
VOLTAGE OPTIONS	ZC_006_0020-0001	400V 3N 50/60Hz	400V 3N 50/60Hz 08-11	11	-
	ZC_006_0020-0002	230V 3~ 50/60Hz	230V 3~ 50/60Hz 08-11	11	-
	ZC_006_0020-0003	230V 1N 50/60Hz	230V 1N 50/60Hz 08-11	11	-
	ZC_006_0020-0005	440V 3~ (No N) 50/60 Hz	440V 3~ (No N) 50/60 Hz 08-11	11	-
	ZC_006_0020-0006	400V 3N 50/60Hz	400V 3N 50/60Hz 14	14	-
	ZC_006_0020-0007	230V 3~ 50/60Hz	230V 3~ 50/60Hz 14	14	-
	ZC_006_0020-0008	230V 1N 50/60Hz	230V 1N 50/60Hz 14	14	-
	ZC_006_0020-0009	440V 3~ (No N) 50/60 Hz	440V 3~ (No N) 50/60 Hz 14	14	-
	ZC_006_0020-0010	400V 3N 50/60Hz	400V 3N 50/60Hz 18	18	-
	ZC_006_0020-0011	230V 3~ 50/60Hz	230V 3~ 50/60Hz 18	18	-
	ZC_006_0020-0012	230V 1N 50/60Hz	230V 1N 50/60Hz 18	18	-
	ZC_006_0020-0013	440V 3~ (No N) 50/60 Hz	440V 3~ (No N) 50/60 Hz 18	18	-
	ZC_006_0020-0014	400V 3N 50/60Hz	400V 3N 50/60Hz 25	25	-
	ZC_006_0020-0015	230V 3~ 50/60Hz	230V 3~ 50/60Hz 25	25	-
	ZC_006_0020-0016	230V 1N 50/60Hz	230V 1N 50/60Hz 25	25	-
	ZC_006_0020-0017	440V 3~ (No N) 50/60 Hz	440V 3~ (No N) 50/60 Hz 25	25	-

## Kits For Washer Extractors LR 11 - 14 - 18 - 25 Kg

Kits available to incorporate into machines already manufactured.

CODE	KIT DESCRIPTION		MODELS				€
19018632	ANCHORING BASE N/R-11		11				-
19013631	ANCHORING BASE N/R-14	The LR fast-spin washer extractors must be installed anchored to the floor. Therefore, Fagor offers the anchoring bases for these LR washer extractors as an option.		14			-
19013632	ANCHORING BASE N/R-18				18		-
19013633	ANCHORING BASE N/R-25	The price of the machine does not include the anchoring base.				25	-
19038354	DOUBLE DRAIN KIT 3" (external)	Recommended for LR-11 and LR-14 machines	11	14	18	25	-
19040866	DOUBLE DRAIN KIT N/R-18/25/35				18	25	-
19034838	EXTRA DOSAGE KIT	6 extra signals for dosing	11	14	18	25	-
19068044	WASHER PRINTER KIT		11	14	18	25	-
19004570	STEAM KIT N/R/H-11/14/18	To convert an E or HW machine to Steam version (S)	11	14	18		-
19004571	STEAM KIT N/R/H-25					25	-
SPECIFIC SELF-SERVICE KITS							
19011224	100 TOKENS KIT		11	14	18	25	-
19035771	AUTOMATIC UNBLOCKAGE KIT		11	14	18	25	-
19045296	COIN BOX KIT (KEY A)		11	14	18	25	-
19045297	COIN BOX KIT (KEY B)		11	14	18	25	-
19045298	COIN BOX KIT (KEY C)		11	14	18	25	-
19045299	COIN BOX KIT (KEY D)		11	14	18	25	-
19045300	COIN BOX KIT (KEY E)		11	14	18	25	-
19045301	COIN BOX KIT (KEY F)		11	14	18	25	-
19045302	COIN BOX KIT (KEY G)		11	14	18	25	-
19045303	COIN BOX KIT (KEY H)		11	14	18	25	-
19045304	COIN BOX KIT (KEY I)		11	14	18	25	-
19045305	COIN BOX KIT (KEY J)		11	14	18	25	-
19059022	BLACK COIN MECHANISM KIT EUR+GBP	EUROPE - UK		14	18	25	-
19059023	BLACK COIN MECHANISM KIT USA+MEX+CAN	USA - CANADA - MEXICO	11	14	18	25	-
19059024	BLACK COIN MECHANISM KIT CNY-TWD-HKD	CHINA - TAIWAN - HONG KONG	11	14	18	25	-
19059026	BLACK COIN MECHANISM KIT TRY-PLN	TURKEY - POLAND	11	14	18	25	-
19059025	BLACK COIN MECHANISM KIT AUD-NZD-JPY	AUSTRALIA - NEW ZEALAND - JAPAN	11	14	18	25	-
19059027	BLACK COIN MECHANISM KIT RUB-ROB-CZK	RUSSIA - ROMANIA - CZECH REPUBLIC	11	14	18	25	-
19059028	BLACK COIN MECHANISM KIT MYR-SGD-IDR I (0.5)	MALAYSIA- SINGAPORE - INDONESIA	11	14	18	25	-
19059033	BLACK COIN MECHANISM KIT MYR-SGD-IDR II (0.1-0.2-0.5)	MALAYSIA- SINGAPORE - INDONESIA	11	14	18	25	-
19059029	BLACK COIN MECHANISM KIT ARS-CLP-BRL	ARGENTINA - CHILE - BRAZIL	11	14	18	25	-
19059030	BLACK COIN MECHANISM KIT VEF-PEN-COP	VENEZUELA - PERU - COLOMBIA	11	14	18	25	-
19059031	BLACK COIN MECHANISM KIT MAD-DZD-TND	MOROCCO - ALGERIA - TUNISIA	11	14	18	25	-
19059032	BLACK COIN MECHANISM KIT KRW-PHP-THB	KOREA - PHILIPPINES - THAILAND	11	14	18	25	-
19059034	BLACK COIN MECHANISM KIT MECHANICAL TOKENS		11	14	18	25	-
19059035	BLACK COIN MECHANISM KIT MECHANICAL EUR		11	14	18	25	-
19059735	PAYMENT CENTRAL KIT		11	14	18	25	-

# Normal spin

G Force = 200 / 150



LN-35 TP2



01.

This range is specially designed and conceived for those markets and customers who look for a simple washer.

02.

Hard-mounted machines with a G force of 200, these models stand out for their energy efficiency and low detergent and water consumption.

03.

The range is available with capacities of between 11 and 60 kg.

# Normal spin

Hard-Mounted Machines | **G Force = 200** | 11 - 14 - 18 - 25 - 35 Kg | **G Force = 150** | 60 Kg



LN-35 TP2

## General characteristics

- Drum and jacket in AISI-304 stainless steel.
  - Unit exterior manufactured in skin plate, colour grey, stainless steel appearance.
  - Tank with 4 detergent compartments.
  - 8 signals for automatic liquid dosing, programmable in time and delay. 6 extra signals available optionally.
  - 3 standard water inlets.
  - Variable-frequency drive (standard 50-60 Hz). Balancing system controlled by the same drive.
  - New second-generation TOUCH PLUS programmer with 7" touch screen, 37 available languages and which lets you create an indefinite number of programs (29 pre-set).
  - Allows programming, importing and exporting of programs and software updates via USB.
  - Standard traceability: the whole wash process (temperatures, water levels) is stored in the washer and extractable to a PC by USB memory.
  - Wet Cleaning characteristics included in the programmer (modifiable water levels and washing speed).
  - Intelligent weighing system or manual load indication system to optimise water and detergent consumption at lower loads.
  - "LOADING AID" system, water inlet and spin control to load the linen.
  - The standard model can be converted to self-service by installing a pay station kit, coin mechanism kit or other payment system. RS-485 communication.
  - Washers compatible with water recovery tanks.
  - CE, WRAS and EAC product certifications. Optional ETL-certified version of the machine.
- ANCHORAGE TO THE FLOOR**
- These machines need to be anchored to the floor.
  - FAGOR offers anchoring bases specific to each model, which must be ordered separately (see table of optional kits).
  - The price of the machine does not include the anchoring base.

MODEL	CODE (*)		CAPACITY KG		DRUM		DOOR		SPIN		HEATING		VOLT (**)	ELEC. POWER MAX- KW	DIMENSIONS MM	€
	STANDARD	CONFIGURABLE	(1:9)	(1:10)	Ø X DEPTH LITRES	Ø	R.P.M.	G	TYPE	POWER						
LN-11 TP2 E	19058460	18001875	11	10	620x330 100	373	759	200	E	6 kW	T	6.25	719x684x1,158	-		
LN-11 TP2 HW	19061848	18002000	11	10	620x330 100	373	759	200	HW		M	1.10	719x684x1,158	-		
LN-14 TP2 E	19058459	18001874	14	13	620x430 130	373	759	200	E	9 kW	T	9.50	719x830x1,158	-		
LN-14 TP2 HW	19061850	18001998	14	13	620x430 130	373	759	200	HW		M	1.10	719x830x1,158	-		
LN-18 TP2 E	19058458	18001873	20	18	700x470 180	460	714	200	E	12 kW	T	12.75	788x840x1,307	-		
LN-18 TP2 HW	19061852	18001996	20	18	700x470 180	460	714	200	HW		M	2.20	788x840x1,307	-		
LN-25 TP2 E	19058457	18001872	28	25	770x530 250	460	682	200	E	18 kW	V	19.00	884x1,011x1,307	-		
LN-25 TP2 HW	19061854	18001994	28	25	770x530 250	460	682	200	HW		M	3.00	884x1,011x1,307	-		
LN-35 TP2 E	19058455	18001871	39	35	860x602 350	560	644	200	E	21 kW	V	22.00	979x1,066x1,411	-		
LN-35 TP2 HW	19061856	18001992	39	35	860x602 350	560	644	200	HW		M	4.00	979x1,066x1,411	-		
LN-60 TP2 E	19058403	18001855	67	60	1,048x684 600	560	505	150	E	28.8 kW	X	31.30	1,225x1,279x1,640	-		
LN-60 TP2 HW	19061903	18001942	67	60	1,048x684 600	560	505	150	HW		X	5.50	1,225x1,279x1,640	-		

(\*) : STANDARD Code: Use this code for orders of machines which do not include any option or version different to standard. The retail price is the one shown in the table.  
 Code WITH OPTIONS: Use this code for orders of machines which include any option or options from the table OPTIONS FOR WASHERS. The retail price is calculated by adding the price increases for each option to the retail price of the standard code

### Heating systems in models 11 - 14 - 18 - 25 - 35 - 60

E: Electric heating system. Heated by means of stainless steel armoured heating elements.  
 HW: Hot Water inlet. Wash with hot water from the network.

### (\*\*) Standard voltages in 11 - 14 - 18 - 25 - 35 - 60

M: SINGLE-PHASE model. Convertible to: - 230 V 3 ~ (Three-phase)  
 - 400 V 3N (Three-phase)  
 T: THREE-PHASE model 400 V 3N / 230 V 3 ~. Convertible to: - 230 V 1N (Single-phase)  
 V: 400 V 3N model. Convertible to: - 230 V 3 ~  
 X: MODEL 400 V 3N. Upon request: - 230 V 3 ~

## Options For Washer Extractors LN 11 - 14 - 18 - 25 - 35 - 60 Kg

Versions and options available to include in configurable codes "18".

Factory assembly for machines ordered with their configurable code.

OPTION	CODE	ABBREVIATION	DESCRIPTION	MODELS						€	
ACCESSORIES	ZC_006_0013-0001	RD	REVERSIBLE DOOR	11	14	18	25	35	60	-	
	ZC_006_0013-0003	UD	AUTOMATIC UNBLOCKAGE	11	14	18	25	35	60	-	
	ZC_006_0013-0005	TR	TROPICALISED	11	14	18	25	35	60	-	
	ZC_006_0013-0010	PR	PRINTER	11	14	18	25	35	60	-	
	ZC_006_0013-0012	TK	100 TOKENS	11	14	18	25	35	60	-	
	ZC_006_0013-0014	RC	RECIRCULATION N/R-11	11						-	
	ZC_006_0013-0016	RC	RECIRCULATION N/R-14		14					-	
	ZC_006_0013-0018	RC	RECIRCULATION N/R-18			18				-	
	ZC_006_0013-0020	RC	RECIRCULATION N/R-25				25			-	
	ZC_006_0013-0022	RC	RECIRCULATION N/R-35					35		-	
	ZC_006_0013-0025	RC	RECIRCULATION N-60						60	-	
	ZC_006_0013-0002	SG	SILICONE SEAL 8-14	11	14					-	
	ZC_006_0013-0032	SG	SILICONE SEAL 18-25			18	25			-	
	ZC_006_0013-0035	XD	EXTRA DOSAGE 11-35	11	14	18	25	35		-	
	ZC_006_0013-0036	XD	EXTRA DOSAGE 45-120						60	-	
EXTERNAL CASE	ZC_006_0015-0003	SSC	SSC STAINLESS STEEL UNIT N/R-11	11						-	
	ZC_006_0015-0004	SSF	SSC STAINLESS STEEL FRONT N/R-11	11						-	
	ZC_006_0015-0007	SSC	SSC STAINLESS STEEL UNIT N/R-14		14					-	
	ZC_006_0015-0008	SSF	SSC STAINLESS STEEL FRONT N/R-14		14					-	
	ZC_006_0015-0011	SSC	SSC STAINLESS STEEL UNIT N/R-18			18				-	
	ZC_006_0015-0012	SSF	SSC STAINLESS STEEL FRONT N/R-18			18				-	
	ZC_006_0015-0015	SSC	SSC STAINLESS STEEL UNIT N/R-25				25			-	
	ZC_006_0015-0016	SSF	SSC STAINLESS STEEL FRONT N/R-25				25			-	
	ZC_006_0015-0019	SSC	SSC STAINLESS STEEL UNIT N/R-35					35		-	
	ZC_006_0015-0020	SSF	SSC STAINLESS STEEL FRONT N/R-35					35		-	
ZC_006_0015-0023	SSC	SSC STAINLESS STEEL UNIT N-60						60	-		
ZC_006_0015-0024	SSF	SSC STAINLESS STEEL FRONT N-60						60	-		
DRAIN OPTIONS	ZC_006_0018-0009	NC	NC DRAIN NORMALLY CLOSED N/R-11	11						-	
	ZC_006_0018-0017	NC	NC DRAIN NORMALLY CLOSED N/R-14		14					-	
	ZC_006_0018-0025	NC	NC DRAIN NORMALLY CLOSED N/R-18			18				-	
	ZC_006_0018-0026	DD	DD DOUBLE DRAIN N/R-18/25/35			18	25	35		-	
	ZC_006_0018-0033	NC	NC DRAIN NORMALLY CLOSED N/R-25				25			-	
	ZC_006_0018-0041	NC	NC DRAIN NORMALLY CLOSED N/R-35					35		-	
	ZC_006_0018-0053	NC	NC DRAIN NORMALLY CLOSED N-60						60	-	
ZC_006_0018-0054	DD	DD DOUBLE DRAIN N-60						60	-		
MODE OF PAYMENT	ZC_006_0012-0016	CP	CP CONVERSION TO PAYMENT CENTRAL 11-35	11	14	18	25	35	60	-	
	ZC_006_0012-0017	CT	CT ONLY TOKENS 11-35	11	14	18	25	35	60	-	
	ZC_006_0012-0018	CA	CA (EUR-GBP) 11-35		EUROPE - UK	14	18	25	35	60	-
	ZC_006_0012-0019	CB	CB (USD-MXN-CAD) 11-35	11	14	18	25	35	60	-	
	ZC_006_0012-0020	CC	CC (CNY-TWD-HKD) 11-35	11	14	18	25	35	60	-	
	ZC_006_0012-0021	CD	CD (TRY-PLN) 11-35	11	14	18	25	35	60	-	
	ZC_006_0012-0022	CE	CE (AUD-NZD-JPY) 11-35	11	14	18	25	35	60	-	
	ZC_006_0012-0023	CF	CF (RUB-ROB-CZK) 11-35	11	14	18	25	35	60	-	
	ZC_006_0012-0024	CG	CG (MYR-SGD-IDR) I 1-35	11	14	18	25	35	60	-	
	ZC_006_0012-0025	CH	CH (MYR-SGD-IDR) II 1-35	11	14	18	25	35	60	-	
	ZC_006_0012-0026	CI	CI (ARS-CLP-BRL) 11-35	11	14	18	25	35	60	-	
	ZC_006_0012-0027	CJ	CJ (VEF-PEN-COP) 11-35	11	14	18	25	35	60	-	
	ZC_006_0012-0028	CK	CK (MAD-DZD-TND) 11-35	11	14	18	25	35	60	-	
ZC_006_0012-0029	CL	CL (KRW-PHP-THB) 11-35	11	14	18	25	35	60	-		
ZC_006_0012-0030	CN	CN (EUR MECHANICAL) 11-35	11	14	18	25	35	60	-		
COIN BOX	ZC_006_0014-0001	A	A COIN BOX A	11	14	18	25	35	60	-	
	ZC_006_0014-0002	B	B COIN BOX B	11	14	18	25	35	60	-	
	ZC_006_0014-0003	C	C COIN BOX C	11	14	18	25	35	60	-	
	ZC_006_0014-0004	D	D COIN BOX D	11	14	18	25	35	60	-	
	ZC_006_0014-0005	E	E COIN BOX E	11	14	18	25	35	60	-	
	ZC_006_0014-0006	F	F COIN BOX F	11	14	18	25	35	60	-	
	ZC_006_0014-0007	G	G COIN BOX G	11	14	18	25	35	60	-	
	ZC_006_0014-0008	H	H COIN BOX H	11	14	18	25	35	60	-	
	ZC_006_0014-0009	I	I COIN BOX I	11	14	18	25	35	60	-	
	ZC_006_0014-0010	J	J COIN BOX J	11	14	18	25	35	60	-	



Laundry | Self-Service

OPTION	CODE	ABBREVIATION	DESCRIPTION	MODELS	€
VOLTAGE OPTIONS	ZC_006_0020-0001	400V 3N 50/60Hz	400V 3N 50/60Hz 08-11	11	-
	ZC_006_0020-0002	230V 3~ 50/60Hz	230V 3~ 50/60Hz 08-11	11	-
	ZC_006_0020-0003	230V 1N 50/60Hz	230V 1N 50/60Hz 08-11	11	-
	ZC_006_0020-0005	440V 3~ (No N) 50/60 Hz	440V 3~ (No N) 50/60 Hz 08-11	11	-
	ZC_006_0020-0006	400V 3N 50/60Hz	400V 3N 50/60Hz 14	14	-
	ZC_006_0020-0007	230V 3~ 50/60Hz	230V 3~ 50/60Hz 14	14	-
	ZC_006_0020-0008	230V 1N 50/60Hz	230V 1N 50/60Hz 14	14	-
	ZC_006_0020-0009	440V 3~ (No N) 50/60 Hz	440V 3~ (No N) 50/60 Hz 14	14	-
	ZC_006_0020-0010	400V 3N 50/60Hz	400V 3N 50/60Hz 18	18	-
	ZC_006_0020-0011	230V 3~ 50/60Hz	230V 3~ 50/60Hz 18	18	-
	ZC_006_0020-0012	230V 1N 50/60Hz	230V 1N 50/60Hz 18	18	-
	ZC_006_0020-0013	440V 3~ (No N) 50/60 Hz	440V 3~ (No N) 50/60 Hz 18	18	-
	ZC_006_0020-0014	400V 3N 50/60Hz	400V 3N 50/60Hz 25	25	-
	ZC_006_0020-0015	230V 3~ 50/60Hz	230V 3~ 50/60Hz 25	25	-
	ZC_006_0020-0016	230V 1N 50/60Hz	230V 1N 50/60Hz 25	25	-
	ZC_006_0020-0017	440V 3~ (No N) 50/60 Hz	440V 3~ (No N) 50/60 Hz 25	25	-
	ZC_006_0020-0032	400V 3N 50/60Hz	400V 3N 50/60Hz 35	35	-
	ZC_006_0020-0033	230V 3~ 50/60Hz	230V 3~ 50/60Hz 35	35	-
	ZC_006_0020-0034	230V 1N 50/60Hz	230V 1N 50/60Hz 35	35	-
	ZC_006_0020-0035	440V 3~ (No N) 50/60 Hz	440V 3~ (No N) 50/60 Hz 35	35	-
	ZC_006_0020-0025	400V 3N 50/60Hz	400V 3N 50/60Hz 60	60	-
	ZC_006_0020-0026	230V 3~ 50/60Hz	230V 3~ 50/60Hz 60	60	-
	ZC_006_0020-0028	440V 3~ (No N) 50/60 Hz	440V 3~ (No N) 50/60 Hz 60	60	-

### Kits For Washer Extractors LN 11 - 14 - 18 - 25 - 35 - 60 Kg

Kits available to incorporate into machines already manufactured.

CODE	KIT DESCRIPTION	MODELS	€
19018632	ANCHORING BASE N/R-11	11	-
19013631	ANCHORING BASE N/R-14	14	-
19013632	ANCHORING BASE N/R-18	18	-
19013633	ANCHORING BASE N/R-25	25	-
19013634	ANCHORING BASE N-35	35	-
19034831	ANCHORING BASE N-60	60	-
19038354	DOUBLE DRAIN KIT 3" (external)	Recommended for LN-11 and LN-14 machines	11 14 18 25 35 60
19040866	DOUBLE DRAIN KIT N/R-18/25/35	18 25 35	-
19035697	DOUBLE DRAIN KIT N-60	60	-
19034838	EXTRA DOSAGE KIT	6 extra signals for dosing	11 14 18 25 35 60
19068044	WASHER PRINTER KIT	11 14 18 25 35 60	-
19004570	STEAM KIT N/R/H-11/14/18	11 14 18	-
19004571	STEAM KIT N/R/H-25	25	-
19019013	STEAM KIT N/R-35	35	-
19035698	STEAM KIT N-60	60	-
SPECIFIC SELF-SERVICE KITS			
19011224	100 TOKENS KIT	11 14 18 25 35 60	-
19035771	AUTOMATIC UNBLOCKAGE KIT	11 14 18 25 35 60	-
19045296	COIN BOX KIT (KEY A)	11 14 18 25 35 60	-
19045297	COIN BOX KIT (KEY B)	11 14 18 25 35 60	-
19045298	COIN BOX KIT (KEY C)	11 14 18 25 35 60	-
19045299	COIN BOX KIT (KEY D)	11 14 18 25 35 60	-
19045300	COIN BOX KIT (KEY E)	11 14 18 25 35 60	-
19045301	COIN BOX KIT (KEY F)	11 14 18 25 35 60	-
19045302	COIN BOX KIT (KEY G)	11 14 18 25 35 60	-
19045303	COIN BOX KIT (KEY H)	11 14 18 25 35 60	-
19045304	COIN BOX KIT (KEY I)	11 14 18 25 35 60	-
19045305	COIN BOX KIT (KEY J)	11 14 18 25 35 60	-
19059022	BLACK COIN MECHANISM KIT EUR+GBP	11 14 18 25 35 60	-
19059023	BLACK COIN MECHANISM KIT USA+MEX+CAN	11 14 18 25 35 60	-
19059024	BLACK COIN MECHANISM KIT CNY-TWD-HKD	11 14 18 25 35 60	-
19059026	BLACK COIN MECHANISM KIT TRY-PLN	11 14 18 25 35 60	-
19059025	BLACK COIN MECHANISM KIT AUD-NZD-JPY	11 14 18 25 35 60	-
19059027	BLACK COIN MECHANISM KIT RUB-ROB-CZK	11 14 18 25 35 60	-
19059028	BLACK COIN MECHANISM KIT MYR-SGD-IDR I (0.5)	11 14 18 25 35 60	-
19059033	BLACK COIN MECHANISM KIT MYR-SGD-IDR II (0.1-0.2-0.5)	11 14 18 25 35 60	-
19059029	BLACK COIN MECHANISM KIT ARS-CLP-BRL	11 14 18 25 35 60	-
19059030	BLACK COIN MECHANISM KIT VEF-PEN-COP	11 14 18 25 35 60	-
19059031	BLACK COIN MECHANISM KIT MAD-DZD-TND	11 14 18 25 35 60	-
19059032	BLACK COIN MECHANISM KIT KRW-PHP-THB	11 14 18 25 35 60	-
19059034	BLACK COIN MECHANISM KIT MECHANICAL TOKENS	11 14 18 25 35 60	-
19059035	BLACK COIN MECHANISM KIT MECHANICAL EUR	11 14 18 25 35 60	-
19059735	BLACK PAYMENT CENTRAL KIT	11 14 18 25 35 60	-

FAGOR



# Dryers

<b>Dryers</b> .....	240
— Advance.....	242
— Concept .....	246
— Economic Line.....	249
<b>Stack Dryers</b> .....	252
— Advance.....	253
— Concept .....	253
— Economic Line.....	253
<b>Heat Pump Dryers</b> .....	257
— Advance +.....	259
— Advance.....	259

Special models or any other variant on the standard model are to be assembled in factory, and carry a supplement over the price indicated for the standard model.

Please consult Fagor Industrial for any other variant or option not reflected on this list.

# Tumble dryers

ADVANCE, CONCEPT and ECONOMIC LINE models can be acquired in Self-Service versions, keeping the same features as the standard versions. Therefore, Fagor dryers offer a great versatility as the self-service versions can easily be adapted to different paying options.

ADVANCE

CONCEPT

ECONOMIC-LINE



FAGOR INDUSTRIAL  
TUMBLE DRYERS  
BETWEEN MODEL SR 11  
AND SR 35 KG ARE  
SPECIALLY DESIGNED FOR  
THE SELF-SERVICE  
SECTOR.

## Product range

### ADVANCE

CONTROL TYPE	HEATING	CAPACITY				
		11-12 KG	17-18 KG	22-24 KG	26-29 KG	33-37 KG
Touch Plus Control (TP2) SELF SERVICE	Electric -Gas	SR-11 TP2	SR-16 TP2	SR-23 TP2	SR-28 TP2	SR-35 TP2

### CONCEPT

CONTROL TYPE	HEATING	CAPACITY				
		11-12 KG	17-18 KG	22-24 KG	26-29 KG	33-37 KG
Easy Control (M) SELF SERVICE	Electric -Gas	SR-11 M	SR-16 M	SR-23 M	SR-28 M	SR-35 M

### Economic line

CONTROL TYPE	HEATING	CAPACITY		
		11-12 KG	17-18 KG	22-24 KG
Easy Control (M) SELF SERVICE	Electric -Gas	SC-11 M	SC-16 M	SC-23 M

### Stack | ADVANCE

CONTROL TYPE	HEATING	CAPACITY	
		11-12 KG	17-18 KG
Touch Plus Control (TP2)	Electric -Gas	SR-2-11 TP2	SR-2-16 TP2
Touch Plus Control (TP2) SELF SERVICE	Electric -Gas	SR-2-11 TP2	SR-2-16 TP2

### Stack | CONCEPT

CONTROL TYPE	HEATING	CAPACITY	
		11-12 KG	17-18 KG
Easy Control (M)	Electric -Gas	SR-2-11 M	SR-2-16 M
Easy Control (M) SELF SERVICE	Electric -Gas	SR-2-11 M	SR-2-16 M

### Stack | Economic line

CONTROL TYPE	HEATING	CAPACITY	
		11-12 KG	17-18 KG
Easy Control (M)	Electric -Gas	SC-2-11 M	SC-2-16 M
Easy Control (M) SELF SERVICE	Electric -Gas	SC-2-11 M	SC-2-16 M

### Heat Pump | ADVANCE +

CONTROL TYPE	HEATING	CAPACITY		
		11-12 KG	17-18 KG	22-24 KG
Touch Plus Control (TP2) SELF SERVICE	Heat Pump	SR-11 TP2 HE PLUS	SR-16 TP2 HE PLUS	SR-23 TP2 HE PLUS

### Heat pump | ADVANCE

CONTROL TYPE	HEATING	CAPACITY		
		11-12 KG	17-18 KG	22-24 KG
Touch Plus Control (TP2) SELF SERVICE	Heat Pump	SR-11 TP2 HE	SR-16 TP2 HE	SR-23 TP2 HE

# Low and medium capacity

11 - 16 - 23 - 28 - 35 kg



## ADVANCE General characteristics

- Touch Plus Control Processor (TP2) with 4.3" touchscreen.
- External steel casing with grey coating (skinplate), stainless steel, easy to clean finish.
- Stainless steel drum.
- Axial-radial airflow, resulting in greater drying efficiency.
- Drum with perforations for the gentle treatment of fabrics.
- Lint filter at the bottom, more ergonomic, larger and improved airflow.
- Automatic reverse rotation of the drum.
- Frequency variator for smoother operation.
- Ergonomic door with a large opening and the option of double glazing.
- Anti-crease system.
- End of cycle tone.
- Emergency stop button and security micro magnet to stop operation.
- Motion transmission by geared motor on models up to 23 kg, by pulley and Poly-V belts with the drum supported by wheel on models between 28 and 35 kg.

### Options:

- iDry System (Intelligent moisture sensor + Temperature control at drum entry).
- FK System (Integrated fire prevention system).
- Double cladding with thermal insulation for top energy efficiency.

MODEL (#)	CODE (**)		CAPACITY KG		PRODUCTION KG/H	DRUM LITRES	DOOR Ø (MM)	POWER KW (*)			DIMENSIONS MM	€	
	STANDARD	WITH OPTIONS	(1:18)	(1:22)				HEATING	TOTAL ELECTRIC				
SR-11 TP2 E	19071860	18003083	12	10	21	210	574	ELEC	12	12,55	V	785x840x1.694	-
SR-11 TP2 G	19071861	18003084	12	10	21	210	574	GAS	20,5	0,55	M	785x840x1.694	-
SR-16 TP2 E	19071872	18003094	18	15	33	330	574	ELEC	18	18,55	V	785x1.110x1.694	-
SR-16 TP2 G	19071873	18003095	18	15	33	330	574	GAS	20,5	0,55	M	785x1.110x1.694	-
SR-23 TP2 E	19071882	18003105	26	21	46	460	574	ELEC	24	24,97	V	890x1.245x1.812	-
SR-23 TP2 G	19071883	18003106	26	21	46	460	574	GAS	31	0,97	M	890x1.245x1.812	-
SR-28 TP2 E	19071893	18003116	31	25	55	550	802	ELEC	30	31,15	V	985x1.054x1.946	-
SR-28 TP2 G	19071894	18003117	31	25	55	550	802	GAS	41	1,15	M	985x1.054x1.946	-
SR-35 TP2 E	19071902	18003125	37	30	66	660	802	ELEC	36	37,15	V	985x1.210x1.946	-
SR-35 TP2 G	19071359	18003126	37	30	66	660	802	GAS	41	1,15	M	985x1.210x1.946	-

(\*\*): STANDARD Code: Use this code for orders of machines which do not include any option or version different to standard. The retail price is as indicated in the table.  
 WITH OPTIONS Code: Use this code for orders of machines which include any option or options from the table OPTIONS FOR DRYERS. The retail price is calculated by adding the price increases for each option to the retail price of the standard code.

(#): MODEL: Heating Systems (\*) : Voltages : Models E - G - S: 50 Hz -Optional 60 Hz  
 E: Electric Heating System by resistance. T: Code for 230 V III / 400 V III +N (Three-phase)  
 G: Gas heating system With a security system and ignition system. M: SINGLE PHASE Model (230 V 1+N). Can also be connected to:  
 Indicate the type of gas available (Butane, Propane, Natural, etc.). -230 V III (Three-phase)  
 -400 V III +N (Three phase)  
 V: Code for 400 V III +N (Three-phase) (Optional, 230 V III) only  
 FOR BOATS:  
 Only models with electric heating.  
 Voltage for boats 440 V III - without neutral - 60 Hz.

Options for **ADVANCE PLUS** dryers 11 - 16 - 23 - 35 kg

NAME OF CHARACTERISTIC	CODE	ABBREVIATION	DESCRIPTION	MODELS					€	
REVERSE OPENING DOOR	ZC_006_0001-0001	RD	Reverse opening door 160-660	11	16	23	28	35	-	
STAINLESS	ZC_006_0002-0001	SSC	Casing 210	11					-	
	ZC_006_0002-0002	SSC	Casing 330	16					-	
	ZC_006_0002-0003	SSC	Casing 460	23					-	
	ZC_006_0002-0004	SSC	Casing 550	28					-	
	ZC_006_0002-0005	SSC	Casing 660	35					-	
	ZC_006_0002-0020	SSF	Front 210/330	11	16				-	
	ZC_006_0002-0021	SSF	Front 460	23					-	
	ZC_006_0002-0022	SSF	Front 550/660	28 35					-	
DOUBLE GLAZED	ZC_006_0003-0001	DG	Door 210 to 460	11	16	23				-
	ZC_006_0003-0002	DG	Door 550 to 1500	28 35					-	
FIRE PREVENTION SYSTEM	ZC_006_0004-0001	FEX	Fire Prevention 210/330	11	16				-	
	ZC_006_0004-0002	FEX	Fire Prevention 460/550	23 28					-	
	ZC_006_0004-0003	FEX	Fire Prevention 660	35					-	
MOISTURE CONTROL	ZC_006_0005-0001	IMC	Intelligent moisture control						-	
NON-STANDARD PACKAGING	ZC_006_0006-0001	WB	Wooden packaging 210	11					-	
	ZC_006_0006-0002	WB	Wooden packaging 330	16					-	
	ZC_006_0006-0003	WB	Wooden packaging 460	23					-	
	ZC_006_0006-0004	WB	Wooden packaging 550	28					-	
	ZC_006_0006-0005	WB	Wooden packaging 660	35					-	
VOLTAGE OPTIONS	ZC_006_0008-0005	400V 3N 60 Hz 210-660	400V 3N 60 Hz 210-660	11	16	23	28	35	-	
	ZC_006_0008-0025	230V 3~ 50 Hz 210-330 E	230V 3~ 50 Hz 210-330 E	11 E	16 E				-	
	ZC_006_0008-0030	230V 3~ 50 Hz 210-660 G/V	230V 3~ 50 Hz 210-660 G/V	11 G/S	16 G/S	23 G/S	28 G/S	35 G/S	-	
	ZC_006_0008-0035	230V 3~ 50 Hz 460-660 E	230V 3~ 50 Hz 460-660 E	23 E 28 E 35 E					-	
	ZC_006_0008-0045	230V 3~ 60 Hz 210-330 E	230V 3~ 60 Hz 210-330 E	11 E	16 E				-	
	ZC_006_0008-0050	230V 3~ 60 Hz 460-660 E	230V 3~ 60 Hz 460-660 E	23 E 28 E 35 E					-	
	ZC_006_0008-0080	230V 1N 50 Hz 210 E	230V 1N 50 Hz 210 E	11 E					-	
	ZC_006_0008-0085	230V 1N 60 Hz 210-660 G/V	230V 1N 60 Hz 210-660 G/V	11 G/S	16 G/S	23 G/S	28 G/S	35 G/S	-	
	ZC_006_0008-0105	440/480V 3~ 60 Hz 210-330	440/480V 3~ 60 Hz 210-330	11	16				-	
ZC_006_0008-0115	440/480V 3~ 60 Hz 460-660	440/480V 3~ 60 Hz 460-660	23 28 35					-		
OPTIONAL FLUFF FILTER	ZC_006_0033-0002	F06	FLUFF F. 0.6 (NON STACK)	11	16	23	28	35	-	
	ZC_006_0033-0003	F12	FLUFF F. 1.2 (ALL)	11	16	23	28	35	-	
AIR INTAKE FILTER	ZC_006_0034-0001	AF	AIR INTAKE FILTER	11	16	23	28	35	-	
TROPICALISED ELECTRONICS	ZC_006_0035-0001	TR	TROPICALISED	11	16	23	28	35	-	
PRINTER	ZC_006_0037-0001	PR	PRINTER	11	16	23	28	35	-	
DOSING	ZC_006_0038-0001	DS	DOSING	11	16	23	28	35	-	
OPTIONAL SCREEN	ZC_006_0039-0001	7"	SCREEN 7"	11	16	23	28	35	-	

Fagor Industrial

NAME OF CHARACTERISTIC	CODE	ABBREVIATION	DESCRIPTION	MODELS					€
MODE OF PAYMENT	ZC_006_0030-0001	CP	CP PAYMENT CENTRAL 160/200	11	16	23	28	35	-
	ZC_006_0030-0017	CT	CT ONLY TOKENS 210-660	11	16	23	28	35	-
	ZC_006_0030-0018	CA	CA (EUR-GBP) 210-660	11	16	23	28	35	-
	ZC_006_0030-0019	CB	CB (USD-MXN-CAD) 210-660	11	16	23	28	35	-
	ZC_006_0030-0020	CC	CC (CNY-TWD-HKD) 210-660	11	16	23	28	35	-
	ZC_006_0030-0021	CD	CD (TRY-PLN) 210-660	11	16	23	28	35	-
	ZC_006_0030-0022	CE	CE (AUD-NZD-JPY) 210-660	11	16	23	28	35	-
	ZC_006_0030-0023	CF	CF (RUB-ROB-CZK) 210-660	11	16	23	28	35	-
	ZC_006_0030-0024	CG	CG (MYR-SGD-IDR) I 210-660	11	16	23	28	35	-
	ZC_006_0030-0025	CH	CH (MYR-SGD-IDR) II 210-660	11	16	23	28	35	-
	ZC_006_0030-0026	CI	CI (ARS-CLP-BRL) 210-660	11	16	23	28	35	-
	ZC_006_0030-0027	CJ	CJ (VEF-PEN-COP) 210-660	11	16	23	28	35	-
	ZC_006_0030-0028	CK	CK (MAD-DZD-TND) 210-660	11	16	23	28	35	-
	ZC_006_0030-0029	CL	CL (KRW-PHP-THB) 210-660	11	16	23	28	35	-
	ZC_006_0030-0030	CN	CN (EUR MECANICO) 210-660	11	16	23	28	35	-
COIN BOX	ZC_006_0014-0001	A	A COIN BOX A	11	16	23	28	35	-
	ZC_006_0014-0002	B	B COIN BOX B	11	16	23	28	35	-
	ZC_006_0014-0003	C	C COIN BOX C	11	16	23	28	35	-
	ZC_006_0014-0004	D	D COIN BOX D	11	16	23	28	35	-
	ZC_006_0014-0005	E	E COIN BOX E	11	16	23	28	35	-
	ZC_006_0014-0006	F	F COIN BOX F	11	16	23	28	35	-
	ZC_006_0014-0007	G	G COIN BOX G	11	16	23	28	35	-
	ZC_006_0014-0008	H	H COIN BOX H	11	16	23	28	35	-
	ZC_006_0014-0009	I	I COIN BOX I	11	16	23	28	35	-
	ZC_006_0014-0010	J	J COIN BOX J	11	16	23	28	35	-



## Kits for **ADVANCE** dryers 11 - 16 - 23 - 28 - 35 kg

Kits available for incorporation into assembled machines.

SAP CODE	NAME OF CHARACTERISTIC	DESCRIPTION	MODEL					€
19072542	IMC	Intelligent moisture control kit	11	16	23	28	35	-
19072503	AF	Air inlet filter kit 11-16	11	16				-
19072510	AF	Air inlet filter kit 23			23			-
19072511	AF	Air inlet filter kit 28-35				28	35	-
19068044	PR	Printer kit	11	16	23	28	35	-
19072517	DS	Dosage kit	11	16	23	28	35	-
12146879		Turbo silencer kit ø200	11	16	23	28	35	-
19072519	7"	Screen kit 7" 11-16	11	16				-
19072540	7"	Screen kit 7" 23			23			-
19072541	7"	Screen kit 7" 28-35				28	35	-

\* Check prices at the list of accessories and spare parts.

### Specific self-service kits

CODE	KIT DESCRIPTION	MODELS					€
19011224	100 TOKENS KIT	11	14	18	25	-	
19035771	AUTOMATIC UNBLOCKAGE KIT	11	14	18	25	-	
19045296	COIN BOX KIT (KEY A)	11	14	18	25	-	
19045297	COIN BOX KIT (KEY B)	11	14	18	25	-	
19045298	COIN BOX KIT (KEY C)	11	14	18	25	-	
19045299	COIN BOX KIT (KEY D)	11	14	18	25	-	
19045300	COIN BOX KIT (KEY E)	11	14	18	25	-	
19045301	COIN BOX KIT (KEY F)	11	14	18	25	-	
19045302	COIN BOX KIT (KEY G)	11	14	18	25	-	
19045303	COIN BOX KIT (KEY H)	11	14	18	25	-	
19045304	COIN BOX KIT (KEY I)	11	14	18	25	-	
19045305	COIN BOX KIT (KEY J)	11	14	18	25	-	
19059022	BLACK COIN MECHANISM KIT EUR+GBP		14	18	25	-	
19059023	BLACK COIN MECHANISM KIT USA+MEX+CAN	11	14	18	25	-	
19059024	BLACK COIN MECHANISM KIT CNY-TWD-HKD	11	14	18	25	-	
19059026	BLACK COIN MECHANISM KIT TRY-PLN	11	14	18	25	-	
19059025	BLACK COIN MECHANISM KIT AUD-NZD-JPY	11	14	18	25	-	
19059027	BLACK COIN MECHANISM KIT RUB-ROB-CZK	11	14	18	25	-	
19059028	BLACK COIN MECHANISM KIT MYR-SGD-IDR I (0.5)	11	14	18	25	-	
19059033	BLACK COIN MECHANISM KIT MYR-SGD-IDR II (0.1-0.2-0.5)	11	14	18	25	-	
19059029	BLACK COIN MECHANISM KIT ARS-CLP-BRL	11	14	18	25	-	
19059030	BLACK COIN MECHANISM KIT VEF-PEN-COP	11	14	18	25	-	
19059031	BLACK COIN MECHANISM KIT MAD-DZD-TND	11	14	18	25	-	
19059032	BLACK COIN MECHANISM KIT KRW-PHP-THB	11	14	18	25	-	
19059034	BLACK COIN MECHANISM KIT MECHANICAL TOKENS	11	14	18	25	-	
19059035	BLACK COIN MECHANISM KIT MECHANICAL EUR	11	14	18	25	-	
19059735	PAYMENT CENTRAL KIT	11	14	18	25	-	

# Low and medium capacity

11 - 16 - 23 - 28 - 35 kg

Analogue control

## CONCEPT General characteristics



- Easy Control Processor (M) with time and temperature control.
- External steel casing with grey coating (skinplate), stainless steel, easy to clean finish.
- Stainless steel drum.
- Axial-radial airflow, resulting in greater drying efficiency.
- Drum with stamped perforations for the gentle treatment of fabrics.
- Lint filter at the bottom, more ergonomic, larger and improved airflow.
- Automatic reverse rotation of the drum.
- Frequency inverter for smoother operation.
- Ergonomic door with a large opening and the option of double glazing.
- Anti-wrinkle system.
- End of cycle tone.
- Emergency stop button and security micro magnet to stop operation.
- Motion transmission by geared motor on models up to 23 kg, by pulley and Poly-V belts with the drum supported by wheel on models between 28 and 35 kg.

### Options:

- iDry System (Intelligent moisture sensor + Temperature control at drum entry).
- FK System (Integrated fire prevention system).
- Double cladding with thermal insulation for top energy efficiency.

MODEL (#)	CODE (**)		CAPACITY KG		PRODUCTION KG/H	DRUM LITRES	DOOR Ø (MM)	POWER KW (*)			DIMENSIONS MM	€	
	STANDARD	WITH OPTIONS	(1:18)	(1:22)				HEATING	TOTAL ELECTRIC				
SR-11 M E	19071857	18003080	12	10	21	210	574	ELEC	12	12,55	V	785x840x1.694	-
SR-11 M G	19071858	18003081	12	10	21	210	574	GAS	20,5	0,55	M	785x840x1.694	-
SR-16 M E	19071868	18003091	18	15	33	330	574	ELEC	18	18,55	V	785x1.110x1.694	-
SR-16 M G	19071870	18003092	18	15	33	330	574	GAS	20,5	0,55	M	785x1.110x1.694	-
SR-23 M E	19071880	18003102	26	21	46	460	574	ELEC	24	24,97	V	890x1.245x1.812	-
SR-23 M G	19071361	18003103	26	21	46	460	574	GAS	31	0,97	M	890x1.245x1.812	-
SR-28 M E	19071890	18003113	31	25	55	550	802	ELEC	30	31,15	V	985x1.054x1.946	-
SR-28 M G	19071891	18003114	31	25	55	550	802	GAS	41	1,15	M	985x1.054x1.946	-
SR-35 M E	19071899	18003122	37	30	66	660	802	ELEC	36	37,15	V	985x1.210x1.946	-
SR-35 M G	19071900	18003123	37	30	66	660	802	GAS	41	1,15	M	985x1.210x1.946	-

(\*\*): STANDARD Code: Use this code for orders of machines which do not include any option or version different to standard. The retail price is as indicated in the table.  
 WITH OPTIONS Code: Use this code for orders of machines which include any option or options from the table OPTIONS FOR DRYERS. The retail price is calculated by adding the price increases for each option to the retail price of the standard code.

(#): MODEL: Heating Systems (\*) : Voltages : Models E - G - S: 50 Hz -Optional 60 Hz  
 E: Electric Heating System by resistance. T: Code for 230 V III / 400 V III +N (Three-phase)  
 G: Gas heating system With a security system and ignition system. Indicate the type of gas available (Butane, Propane, Natural, etc.). M: SINGLE PHASE Model (230 V 1+N). Can also be connected to: -230 V III (Three-phase) -400 V III +N (Three phase)  
 V: Code for 400 V III +N (Three-phase) (Optional, 230 V III) only  
 FOR BOATS: Only models with electric heating. Voltage for boats 440 V III - without neutral - 60 Hz.

Options for **CONCEPT** dryers 11 - 16 - 23 - 28 - 35 kg

NAME OF CHARACTERISTIC	CODE	ABBREVIATION	DESCRIPTION	MODELS					€
REVERSE OPENING DOOR	ZC_006_0001-0001	RD	Reverse opening door 160-660	11	16	23	28	35	-
	ZC_006_0002-0001	SSC	Casing 210	11					-
	ZC_006_0002-0002	SSC	Casing 330		16				-
	ZC_006_0002-0003	SSC	Casing 460			23			-
	ZC_006_0002-0004	SSC	Casing 550				28		-
	ZC_006_0002-0005	SSC	Casing 660					35	-
	ZC_006_0002-0020	SSF	Front 210/330	11	16				-
	ZC_006_0002-0021	SSF	Front 460			23			-
STAINLESS	ZC_006_0002-0022	SSF	Front 550/660				28	35	-
	ZC_006_0003-0001	DG	Door 210 to 460	11	16	23			-
DOUBLE GLAZED	ZC_006_0003-0002	DG	Door 550 to 1500				28	35	-
	ZC_006_0006-0001	WB	Wooden packaging 210	11					-
NON-STANDARD PACKAGING	ZC_006_0006-0002	WB	Wooden packaging 330		16				-
	ZC_006_0006-0003	WB	Wooden packaging 460			23			-
	ZC_006_0006-0004	WB	Wooden packaging 550				28		-
	ZC_006_0006-0005	WB	Wooden packaging 660					35	-
STEAM BATTERY	ZC_006_0007-0001	LPB	Low pressure 210/330	11	16				-
	ZC_006_0007-0002	LPB	Low pressure 460			23			-
	ZC_006_0007-0003	LPB	Low pressure 550/660				28	35	-
	ZC_006_0007-0005	BSS	Stainless steel 210/330	11	16				-
	ZC_006_0007-0006	BSS	Stainless steel 460			23			-
	ZC_006_0007-0007	BSS	Stainless steel 550/660				28	35	-
	ZC_006_0008-0005	400V 3N 60 Hz 210-660	400V 3N 60 Hz 210-660	11	16	23	28	35	-
VOLTAGE OPTIONS	ZC_006_0008-0025	230V 3~ 50 Hz 210-330 E	230V 3~ 50 Hz 210-330 E	11 E	16 E				-
	ZC_006_0008-0030	230V 3~ 50 Hz 210-660 G/V	230V 3~ 50 Hz 210-660 G/V	11 G/S	16 G/S	23 G/S	28 G/S	35 G/S	-
	ZC_006_0008-0035	230V 3~ 50 Hz 460-660 E	230V 3~ 50 Hz 460-660 E			23 E	28 E	35 E	-
	ZC_006_0008-0045	230V 3~ 60 Hz 210-330 E	230V 3~ 60 Hz 210-330 E	11 E	16 E				-
	ZC_006_0008-0050	230V 3~ 60 Hz 460-660 E	230V 3~ 60 Hz 460-660 E			23 E	28 E	35 E	-
	ZC_006_0008-0080	230V 1N 50 Hz 210 E	230V 1N 50 Hz 210 E	11 E					-
	ZC_006_0008-0085	230V 1N 60 Hz 210-660 G/V	230V 1N 60 Hz 210-660 G/V	11 G/S	16 G/S	23 G/S	28 G/S	35 G/S	-
	ZC_006_0008-0105	440/480V 3~ 60 Hz 210-330	440/480V 3~ 60 Hz 210-330	11	16				-
	ZC_006_0008-0115	440/480V 3~ 60 Hz 460-660	440/480V 3~ 60 Hz 460-660			23	28	35	-
	OPTIONAL FLUFF FILTER	ZC_006_0033-0002	F06	FLUFF F. 0.6 (NON STACK)	11	16	23	28	35
ZC_006_0033-0003		F12	FLUFF F. 1.2 (ALL)	11	16	23	28	35	-
AIR INTAKE FILTER	ZC_006_0034-0001	AF	AIR INTAKE FILTER	11	16	23	28	35	-
EASY CONTROL SCREEN	ZC_006_0040-0001	BMS	BMS BM WITH SCREEN	11	16	23	28	35	-

## Kits for **CONCEPT** dryers 11 - 16 - 23 - 28 - 35 kg

Kits available to incorporate into machines already assembled.

SAP CODE	NAME OF CHARACTERISTIC	DESCRIPTION	MODEL					€
19072503	AF	Air inlet filter kit 11-16	11	16				-
19072510	AF	Air inlet filter kit 23			23			-
19072511	AF	Air inlet filter kit 28-35				28	35	-
12146879	-	Turbo silencer kit ø200	11	16	23	28	35	-
12227940	-	Programming console for Easy Control (M)	11	16	23	28	35	-

\* Check prices at the list of accessories and spare parts.

### Specific self-service kits

CODE	KIT DESCRIPTION	MODELS					€
19011224	100 TOKENS KIT	11	14	18	25		-
19035771	AUTOMATIC UNBLOCKAGE KIT	11	14	18	25		-
19045296	COIN BOX KIT (KEY A)	11	14	18	25		-
19045297	COIN BOX KIT (KEY B)	11	14	18	25		-
19045298	COIN BOX KIT (KEY C)	11	14	18	25		-
19045299	COIN BOX KIT (KEY D)	11	14	18	25		-
19045300	COIN BOX KIT (KEY E)	11	14	18	25		-
19045301	COIN BOX KIT (KEY F)	11	14	18	25		-
19045302	COIN BOX KIT (KEY G)	11	14	18	25		-
19045303	COIN BOX KIT (KEY H)	11	14	18	25		-
19045304	COIN BOX KIT (KEY I)	11	14	18	25		-
19045305	COIN BOX KIT (KEY J)	11	14	18	25		-
19059022	BLACK COIN MECHANISM KIT EUR+GBP		14	18	25		-
19059023	BLACK COIN MECHANISM KIT USA+MEX+CAN	11	14	18	25		-
19059024	BLACK COIN MECHANISM KIT CNY-TWD-HKD	11	14	18	25		-
19059026	BLACK COIN MECHANISM KIT TRY-PLN	11	14	18	25		-
19059025	BLACK COIN MECHANISM KIT AUD-NZD-JPY	11	14	18	25		-
19059027	BLACK COIN MECHANISM KIT RUB-ROB-CZK	11	14	18	25		-
19059028	BLACK COIN MECHANISM KIT MYR-SGD-IDR I (0.5)	11	14	18	25		-
19059033	BLACK COIN MECHANISM KIT MYR-SGD-IDR II (0.1-0.2-0.5)	11	14	18	25		-
19059029	BLACK COIN MECHANISM KIT ARS-CLP-BRL	11	14	18	25		-
19059030	BLACK COIN MECHANISM KIT VEF-PEN-COP	11	14	18	25		-
19059031	BLACK COIN MECHANISM KIT MAD-DZD-TND	11	14	18	25		-
19059032	BLACK COIN MECHANISM KIT KRW-PHP-THB	11	14	18	25		-
19059034	BLACK COIN MECHANISM KIT MECHANICAL TOKENS	11	14	18	25		-
19059035	BLACK COIN MECHANISM KIT MECHANICAL EUR	11	14	18	25		-
19059735	PAYMENT CENTRAL KIT	11	14	18	25		-

# Economic line

11 - 16 - 23 kg



## General characteristics

- Easy Control Processor (M) with time and temperature control.
- Stainless steel drum.
- Panels painted white.
- Automatic reverse rotation of the drum.
- Lint filter at the bottom, more ergonomic, larger and improved airflow.
- Frequency inverter for smoother operation.

- Ergonomic door with large opening.
- Anti-wrinkle system.

### OPTION

- Optional screen to view time, temperature and programme (3 possible programmes). The technical menu can also be accessed without having to use the console.

MODEL (#)	CODE (**)		CAPACITY KG		PRODUCTION KG/H	DRUM LITRES	DOOR Ø (MM)	POWER KW (*)			DIMENSIONS MM	€	
	STANDARD	WITH OPTIONS	(1:18)	(1:22)				HEATING	TOTAL ELECTRIC				
SC-11 M E	19071866	18003089	12	10	21	210	574	ELEC	12	12,53	V	780x840x1.694	-
SC-11 M G	19071867	18003090	12	10	21	210	574	GAS	2,50	0,55	M	785x840x1.694	-
SC-16 M E	19071878	18003100	18	15	33	330	574	ELEC	18,00	18,55	V	785x1.110x1.694	-
SC-16 M G	19071879	18003101	18	15	33	330	574	GAS	2,50	0,55	M	785x1.110x1.694	-
SC-23 M E	19071888	18003111	26	21	46	460	574	ELEC	24,00	24,97	V	890x1.245x1.812	-
SC-23 M G	19071889	18003112	26	21	46	460	574	GAS	31,00	0,97	M	890x1.245x1.812	-

(\*\*): STANDARD Code: Use this code for orders of machines which do not include any option or version different to standard. The retail price is as indicated in the table.  
 WITH OPTIONS Code: Use this code for orders of machines which include any option or options from the table OPTIONS FOR DRYERS. The retail price is calculated by adding the price increases for each option to the retail price of the standard code.

(#): MODELS: Heating Systems  
 E: Electric Heating System by heating elements  
 G: Gas heating system Indicate type of gas (Butane, Propane, Natural).  
 (\*): Voltages and frequencies: Models E - G : 50 Hz -Optional 60 Hz  
 M: SINGLE PHASE Model (230 V 1+N). Valid for: 230 V III - 400 V III +N  
 V: Code for 400 V III +N only; Optional, 230 V III

Options for **ECONOMIC LINE** dryers 11 - 16 - 23 kg

Versions and options available to include in configurable codes "18".

Factory assembly for machines ordered with their configurable code.

NAME OF CHARACTERISTIC	CODE	ABBREVIATION	DESCRIPTION	MODELS	€	
REVERSE OPENING DOOR	ZC_006_0001_0001	RD	RD Reverse opening door 210-660	11 16 23	-	
	ZC_006_0008-0005	400V 3N 60 Hz 210-660	400V 3N 60 Hz 210-660	11 16 23	-	
	ZC_006_0008-0025	230V 3~ 50 Hz 210-330 E	230V 3~ 50 Hz 210-330 E	11 E 16 E 23 E	-	
	ZC_006_0008-0030	230V 3~ 50 Hz 210-660 G	230V 3~ 50 Hz 210-660 G	11 G 16 G 23 G	-	
	ZC_006_0008-0035	230V 3~ 50 Hz 460-660 E	230V 3~ 50 Hz 460-660 E	23 E	-	
	ZC_006_0008-0045	230V 3~ 60 Hz 210-330 E	230V 3~ 60 Hz 210-330 E	11 E 16 E	-	
	ZC_006_0008-0050	230V 3~ 60 Hz 460-660 E	230V 3~ 60 Hz 460-660 E	23 E	-	
	ZC_006_0008-0080	230V 1N 50 Hz 210 E	230V 1N 50 Hz 210 E	11 E	-	
	ZC_006_0008-0085	230V 1N 60 Hz 210-660 G/V	230V 1N 60 Hz 210-660 G/V	11 G 16 G 23 G	-	
	ZC_006_0008-0105	440/480V 3~ 60 Hz 210-330	440/480V 3~ 60 Hz 210-330	11 16	-	
ZC_006_0008-0115	440/480V 3~ 60 Hz 460-660	440/480V 3~ 60 Hz 460-660	23	-		
AIR INTAKE FILTER	ZC_006_0034-0001	AF	AIR INTAKE FILTER	11 16 23	-	
EASY CONTROL SCREEN	ZC_006_0040-0001	BMS	BMS BM WITH SCREEN	11 16 23	-	
MODE OF PAYMENT	ZC_006_0030-0001	CP	CP PAYMENT CENTRAL 160/200	11 16 23	-	
	ZC_006_0030-0017	CT	CT ONLY TOKENS 210-660	11 16 23	-	
	ZC_006_0030-0018	CA	CA (EUR-GBP) 210-660	11 16 23	-	
	ZC_006_0030-0019	CB	CB (USD-MXN-CAD) 210-660	11 16 23	-	
	ZC_006_0030-0020	CC	CC (CNY-TWD-HKD) 210-660	11 16 23	-	
	ZC_006_0030-0021	CD	CD (TRY-PLN) 210-660	11 16 23	-	
	ZC_006_0030-0022	CE	CE (AUD-NZD-JPY) 210-660	11 16 23	-	
	ZC_006_0030-0023	CF	CF (RUB-ROB-CZK) 210-660	11 16 23	-	
	ZC_006_0030-0024	CG	CG (MYR-SGD-IDR) I 210-660	11 16 23	-	
	ZC_006_0030-0025	CH	CH (MYR-SGD-IDR) II 210-660	11 16 23	-	
	ZC_006_0030-0026	CI	CI (ARS-CLP-BRL) 210-660	11 16 23	-	
	ZC_006_0030-0027	CJ	CJ (VEF-PEN-COP) 210-660	11 16 23	-	
	ZC_006_0030-0028	CK	CK (MAD-DZD-TND) 210-660	11 16 23	-	
	ZC_006_0030-0029	CL	CL (KRW-PHP-THB) 210-660	11 16 23	-	
	ZC_006_0030-0030	CN	CN (EUR MECANICO) 210-660	11 16 23	-	
	COIN BOX	ZC_006_0014-0001	A	A COIN BOX A	11 16 23	-
		ZC_006_0014-0002	B	B COIN BOX B	11 16 23	-
		ZC_006_0014-0003	C	C COIN BOX C	11 16 23	-
		ZC_006_0014-0004	D	D COIN BOX D	11 16 23	-
		ZC_006_0014-0005	E	E COIN BOX E	11 16 23	-
ZC_006_0014-0006		F	F COIN BOX F	11 16 23	-	
ZC_006_0014-0007		G	G COIN BOX G	11 16 23	-	
ZC_006_0014-0008		H	H COIN BOX H	11 16 23	-	
ZC_006_0014-0009		I	I COIN BOX I	11 16 23	-	
ZC_006_0014-0010		J	J COIN BOX J	11 16 23	-	

Kits for **ECONOMIC LINE** dryers 11 - 16 - 23 kg

Kits available for incorporation into assembled machines.

SAP CODE	NAME OF CHARACTERISTIC	DESCRIPTION	MODELS			€
19072503	AF	Air inlet filter kit 11-16	11	16		-
19072510	AF	Air inlet filter kit 23			23	-
19072511	AF	Air inlet filter kit 28-35				-
12146879	-	Turbo silencer kit ø 200	11	16	23	-
12227940	-	Programming console for Easy Control (M)	11	16	23	-

\* Check prices at the list of accessories and spare parts.

## Specific self-service kits

CODE	KIT DESCRIPTION	MODELS				€
19011224	100 TOKENS KIT	11	14	18	25	-
19035771	AUTOMATIC UNBLOCKAGE KIT	11	14	18	25	-
19045296	COIN BOX KIT (KEY A)	11	14	18	25	-
19045297	COIN BOX KIT (KEY B)	11	14	18	25	-
19045298	COIN BOX KIT (KEY C)	11	14	18	25	-
19045299	COIN BOX KIT (KEY D)	11	14	18	25	-
19045300	COIN BOX KIT (KEY E)	11	14	18	25	-
19045301	COIN BOX KIT (KEY F)	11	14	18	25	-
19045302	COIN BOX KIT (KEY G)	11	14	18	25	-
19045303	COIN BOX KIT (KEY H)	11	14	18	25	-
19045304	COIN BOX KIT (KEY I)	11	14	18	25	-
19045305	COIN BOX KIT (KEY J)	11	14	18	25	-
19059022	BLACK COIN MECHANISM KIT EUR+GBP		14	18	25	-
19059023	BLACK COIN MECHANISM KIT USA+MEX+CAN	11	14	18	25	-
19059024	BLACK COIN MECHANISM KIT CNY-TWD-HKD	11	14	18	25	-
19059026	BLACK COIN MECHANISM KIT TRY-PLN	11	14	18	25	-
19059025	BLACK COIN MECHANISM KIT AUD-NZD-JPY	11	14	18	25	-
19059027	BLACK COIN MECHANISM KIT RUB-ROB-CZK	11	14	18	25	-
19059028	BLACK COIN MECHANISM KIT MYR-SGD-IDR I (0.5)	11	14	18	25	-
19059033	BLACK COIN MECHANISM KIT MYR-SGD-IDR II (0.1-0.2-0.5)	11	14	18	25	-
19059029	BLACK COIN MECHANISM KIT ARS-CLP-BRL	11	14	18	25	-
19059030	BLACK COIN MECHANISM KIT VEF-PEN-COP	11	14	18	25	-
19059031	BLACK COIN MECHANISM KIT MAD-DZD-TND	11	14	18	25	-
19059032	BLACK COIN MECHANISM KIT KRW-PHP-THB	11	14	18	25	-
19059034	BLACK COIN MECHANISM KIT MECHANICAL TOKENS	11	14	18	25	-
19059035	BLACK COIN MECHANISM KIT MECHANICAL EUR	11	14	18	25	-
19059735	PAYMENT CENTRAL KIT	11	14	18	25	-

# Stack dryers

Optimise space with stack dryers

Fagor double drum dryers are compact machines ideal for laundries with little available space and, while they have been designed with the self-service sector in mind, they are also available for hotels, small laundries, etc.

Equipped with all the characteristics of the ADVANCE, CONCEPT and ECONOMIC LINE models.

ADVANCE

CONCEPT

Economic-line



01.

## Versatility

With two drums and greater versatility thanks to two sets of controls, the new stack dryers offer a greater operating capacity and space optimisation.

02.

## Ease

There is one single connection and extraction tube. Installation and maintenance are therefore quicker and easier.

03.

## Self-service

This type of dryer is specially designed for the self-service sector.



## General characteristics

- Fully programable Touch Plus Control "TP2" with 4.3" colour touchscreen (standard on the ADVANCE range). Easy Control "M" with time and temperature control. (standard on the CONCEPT and ECONOMIC LINE ranges).
- External construction in grey skinplate, aesthetic stainless steel (the ECONOMIC LINE range has white painted panels).
- Large loading door (180° opening).
- Automatic reverse rotation of the drum.

- Mixed Flow: axial-radial mixed flow (except for the ECONOMIC LINE range).
- Soft Touch: perforated drum (except for the ECONOMIC LINE).
- Lint filter at the bottom, more ergonomic, larger and improved airflow.
- ECONOMIC LINE range models available with electric or gas heating.
- Anti-wrinkle system.

### Options:

- Double glazed door (except for the ECONOMIC LINE).
- iDRY intelligence moisture detector (option on the ADVANCE range).
- Fire Kare SYSTEM integrated fire prevention system (option on the ADVANCE range).

## ADVANCE

MODEL (#)	CODE (**)		CAPACITY KG		PRODUCTION KG/H	DRUM LITRES	DOOR Ø (MM)	POWER KW (*)			DIMENSIONS MM	€	
	STANDARD	WITH OPTIONS	(1:18)	(1:22)				HEATING	TOTAL ELECTRIC				
SR-2-11 TP2 E	19071933	18003158	23	19	34	210	574	ELEC	2x12,00	25,10	V	785x955x1.980	-
SR-2-11 TP2 G	19071934	18003159	23	19	34	210	574	GAS	2x12,00	1,10	M	785x955x1.980	-
SR-2-16 TP2 E	19071939	18003164	37	30	53	330	574	ELEC	2x12,00	25,10	V	785x1.225x1.980	-
SR-2-16 TP2 G	19071362	18003165	37	30	53	330	574	GAS	2x12,00	1,10	M	785x1.225x1.980	-
SR-2-16 TP2 G TURBO	19071946	-	37	30	53	330	574	GAS	2x24,00	1,10	M	785x1.225x1.980	-

## CONCEPT

MODEL (#)	CODE (**)		CAPACITY KG		PRODUCTION KG/H	DRUM LITRES	DOOR Ø (MM)	POWER KW (*)			DIMENSIONS MM	€	
	STANDARD	WITH OPTIONS	(1:18)	(1:22)				HEATING	TOTAL ELECTRIC				
SR-2-11 M E	19071935	18003160	23	19	34	210	574	ELEC	2x12,00	25,10	V	785x955x1.980	-
SR-2-11 M G	19071936	18003161	23	19	34	210	574	GAS	2x12,00	1,10	M	785x955x1.980	-
SR-2-16 M E	19071940	18003166	37	30	53	330	574	ELEC	2x12,00	25,10	V	785x1.225x1.980	-
SR-2-16 M G	19071941	18003167	37	30	53	330	574	GAS	2x12,00	1,10	M	785x1.225x1.980	-
SR-2-16 G TURBO	19071945	-	37	30	53	330	574	GAS	2x24,00	1,10	M	785x1.225x1.980	-

## Economic-Line

MODEL (#)	CODE (**)		CAPACITY KG		PRODUCTION KG/H	DRUM LITRES	DOOR Ø (MM)	POWER KW (*)			DIMENSIONS MM	€	
	STANDARD	WITH OPTIONS	(1:18)	(1:22)				HEATING	TOTAL ELECTRIC				
SC-2-11 M E	19071937	18003162	23	19	34	210	574	ELEC	2x12,00	25,10	V	785x955x1.980	-
SC-2-11 M G	19071938	18003163	23	19	34	210	574	GAS	2x12,00	1,10	M	785x955x1.980	-
SC-2-16 M E	19071942	18003168	37	30	53	330	574	ELEC	2x12,00	25,10	V	785x1.225x1.980	-
SC-2-16 M G	19071943	18003169	37	30	53	330	574	GAS	2x12,00	1,10	M	785x1.225x1.980	-

(\*\*): STANDARD Code: Use this code for orders of machines which do not include any option or version different to standard. The retail price is as indicated in the table  
 CWITH OPTIONS Code: Use this code for orders of machines which include any option or options from the table OPTIONS FOR DRYERS. The retail price is calculated by adding the price increases for each option to the retail price of the standard code.

(#): MODEL: Heating Systems (\*) : Voltages : Models E - G - S: 50 Hz -Optional 60 Hz  
 E : Electric Heating System by resistance. V : Code for 400 V III +N only; Optional, 230 V III  
 G : Gas heating system M : SINGLE PHASE Model (230 V 1+N). Valid for: 230 V III - 400 V III +N  
 With a security system and ignition system.  
 Indicate the type of gas available (Butane, Propane, Natural, etc.).

Options for **STACK** dryers 11 - 16 kg

Versions and options available to include in configurable codes "18".

Factory assembly for machines ordered with their configurable code.

**ADVANCE**

NAME OF CHARACTERISTIC	CODE	ABBREVIATION	DESCRIPTION	VERSIONS AND MODELS		€
STAINLESS	ZC_006_0002-0009	SSC	Stainless steel casing	11		-
	ZC_006_0002-0010	SSC	Stainless steel casing		16	-
	ZC_006_0002-0020	SSF	Casing in stainless steel	11	16	-
DOUBLE GLAZED	ZC_006_0003-0003	DG	STACK double glazed door (request 1 per stack)	11	16	-
FIRE PREVENTION SYSTEM	ZC_006_0004-0006	FEX	Fire prevention system SFEX STACK	11	16	-
MOISTURE CONTROL	ZC_006_0005-0002	IMC	STACK moisture control	11	16	-
NON-STANDARD PACKAGING	ZC_006_0006-0009	WB	Wooden packaging 210	11		-
	ZC_006_0006-0010	WB	Wooden packaging 330		16	-
VOLTAGE OPTIONS	ZC_006_0008-0095	400V 3~ 50 Hz 210-900/STACK	400V 3N 50 Hz 210-330	11	16	-
	ZC_006_0008-0010	400V 3N 60 Hz 210-330	400V 3N 60 Hz 210-330	11	16	-
	ZC_006_0008-0025	230V 3~ 50 Hz 210-330 E	230V 3~ 50 Hz 210-330 E	11 E	16 E	-
	ZC_006_0008-0070	230V 3~ 60 Hz 210-330 G	230V 3~ 60 Hz 210-330 G	11 G	16 G	-
	ZC_006_0008-0075	230V 3~ 60 Hz 210-330 E	230V 3~ 60 Hz 210-330 E	11 E	16 E	-
	ZC_006_0008-0090	230V 1N 50 Hz 210 E/STACK G	230V 1N 50 Hz 210 E/STACK G	11 G	16 G	-
OPTIONAL FLUFF FILTER	ZC_006_0033-0001	F03	Mesh fluff f. 0.3 mm (standard 0.6 mm)	11	16	-
AIR INTAKE FILTER	ZC_006_0034-0002	AF	Stack air intake filter	11	16	-
TROPICALISED ELECTRONICS	ZC_006_0035-0002	TR	Tropicalised	11	16	-
PRINTER	ZC_006_0037-0002	PR	Printer	11	16	-
DOSING	ZC_006_0038-0002	DS	Dosing	11	16	-

**CONCEPT**

NAME OF CHARACTERISTIC	CODE	ABBREVIATION	DESCRIPTION	VERSIONS AND MODELS		€
STAINLESS STEEL	ZC_006_0002-0009	SSC	Stainless steel casing	11		-
	ZC_006_0002-0010	SSC	Stainless steel casing		16	-
	ZC_006_0002-0024	SSF	Stainless steel casing	11	16	-
DOUBLE GLAZED	ZC_006_0003-0003	DG	STACK double glazed door (request 1 per stack)	11	16	-
NON-STANDARD PACKAGING	ZC_006_0006-0009	WB	Wooden packaging 210	11		-
	ZC_006_0006-0010	WB	Wooden packaging 330		16	-
VOLTAGE OPTIONS	ZC_006_0008-0095	400V 3~ 50 Hz 210-900/STACK	400V 3N 50 Hz 210-330	11	16	-
	ZC_006_0008-0010	400V 3N 60 Hz 210-330	400V 3N 60 Hz 210-330	11	16	-
	ZC_006_0008-0025	230V 3~ 50 Hz 210-330 E	230V 3~ 50 Hz 210-330 E	11 E	16 E	-
	ZC_006_0008-0070	230V 3~ 60 Hz 210-330 G	230V 3~ 60 Hz 210-330 G	11 G	16 G	-
	ZC_006_0008-0075	230V 3~ 60 Hz 210-330 E	230V 3~ 60 Hz 210-330 E	11 E	16 E	-
	ZC_006_0008-0090	230V 1N 50 Hz 210 E/STACK G	230V 1N 50 Hz 210 E/STACK G	11 G	16 G	-
OPTIONAL FLUFF FILTER	ZC_006_0034-0002	F03	Mesh fluff f. 0.3 mm (standard 0.6 mm)	11	16	-
EASY CONTROL SCREEN	ZC_006_0040-0002	BMS	BMS BM WITH SCREEN	11	16	-

**Economic Line**

NAME OF CHARACTERISTIC	CODE	ABBREVIATION	DESCRIPTION	VERSIONS AND MODELS		€
WOODEN PACKAGING	ZC_006_0006-0009	WB	Wooden packaging 210	11	16	-
	ZC_006_0006-0010	WB	Wooden packaging 330	16	16	-
VOLTAGE OPTIONS	ZC_006_0008-0095	400V 3~ 50 Hz 210-900/STACK	400V 3~ 50 Hz 210-900/STACK	11	16	-
	ZC_006_0008-0010	400V 3~ 50 Hz 210-900/STACK	400V 3~ 50 Hz 210-900/STACK	11 E	16 E	-
	ZC_006_0008-0070	230V 3~ 60 Hz STACK G	230V 3~ 50 Hz 210-660 G	11 G	16 G	-
	ZC_006_0008-0075	230V 3~ 60 Hz STACK E	230V 3~ 50 Hz 460-660 E	11 E	16 E	-
	ZC_006_0008-0090	230V 1N 60 Hz 210 E/STACK G	230V 3~ 60 Hz 460-660 E	11 G	16 G	-
	ZC_006_0033-0001	F03	Mesh fluff f. 0.3 mm (standard 0.6 mm)	11	16	-
EASY CONTROL SCREEN	ZC_006_0040-0002	BMS	BMS BM WITH SCREEN	11	16	-

## Options

NAME OF CHARACTERISTIC	CODE	ABBREVIATION	DESCRIPTION	VERSIONS AND MODELS		€
WAY TO PAY (1 UNIT)	ZC_006_0030-0016	CP	CP CENTRAL DE PAGO 210-660	11	16	-
	ZC_006_0030-0017	CT	CT SOLO FICHAS 210-660	11	16	-
	ZC_006_0030-0018	CA	CA (EUR-GBP) 210-660	11	16	-
	ZC_006_0030-0019	CB	CB (USD-MXN-CAD) 210-660	11	16	-
	ZC_006_0030-0020	CC	CC (CNY-TWD-HKD) 210-660	11	16	-
	ZC_006_0030-0021	CD	CD (TRY-PLN) 210-660	11	16	-
	ZC_006_0030-0022	CE	CE (AUD-NZD-JPY) 210-660	11	16	-
	ZC_006_0030-0023	CF	CF (RUB-ROB-CZK) 210-660	11	16	-
	ZC_006_0030-0024	CG	CG (MYR-SGD-IDR) I 210-660	11	16	-
	ZC_006_0030-0025	CH	CH (MYR-SGD-IDR) II 210-660	11	16	-
	ZC_006_0030-0026	CI	CI (ARS-CLP-BRL) 210-660	11	16	-
	ZC_006_0030-0027	CJ	CJ (VEF-PEN-COP) 210-660	11	16	-
	ZC_006_0030-0028	CK	CK (MAD-DZD-TND) 210-660	11	16	-
	ZC_006_0030-0029	CL	CL (KRW-PHP-THB) 210-660	11	16	-
	ZC_006_0030-0030	CN	CN (EUR MECANICO) 210-660	11	16	-
WAY TO PAY (2 UNITS)	ZC_006_0030-0031	CP	CP CENTRAL DE PAGO STACK	11	16	-
	ZC_006_0030-0032	CT	CT SOLO FICHAS STACK	11	16	-
	ZC_006_0030-0033	CA	CA (EUR-GBP) STACK	11	16	-
	ZC_006_0030-0034	CB	CB (USD-MXN-CAD) STACK	11	16	-
	ZC_006_0030-0035	CC	CC (CNY-TWD-HKD) STACK	11	16	-
	ZC_006_0030-0036	CD	CD (TRY-PLN) STACK	11	16	-
	ZC_006_0030-0037	CE	CE (AUD-NZD-JPY) STACK	11	16	-
	ZC_006_0030-0038	CF	CF (RUB-ROB-CZK) STACK	11	16	-
	ZC_006_0030-0039	CG	CG (MYR-SGD-IDR) I STACK	11	16	-
	ZC_006_0030-0040	CH	CH (MYR-SGD-IDR) II STACK	11	16	-
	ZC_006_0030-0041	CI	CI (ARS-CLP-BRL) STACK	11	16	-
	ZC_006_0030-0042	CJ	CJ (VEF-PEN-COP) STACK	11	16	-
	ZC_006_0030-0043	CK	CK (MAD-DZD-TND) STACK	11	16	-
	ZC_006_0030-0044	CL	CL (KRW-PHP-THB) STACK	11	16	-
	ZC_006_0030-0045	CN	CN (EUR MECANICO) STACK	11	16	-
COIN BOX (1 UNIT)	ZC_006_0014-0001	A	A COIN BOX A	11	16	-
	ZC_006_0014-0002	B	B COIN BOX B	11	16	-
	ZC_006_0014-0003	C	C COIN BOX C	11	16	-
	ZC_006_0014-0004	D	D COIN BOX D	11	16	-
	ZC_006_0014-0005	E	E COIN BOX E	11	16	-
	ZC_006_0014-0006	F	F COIN BOX F	11	16	-
	ZC_006_0014-0007	G	G COIN BOX G	11	16	-
	ZC_006_0014-0008	H	H COIN BOX H	11	16	-
	ZC_006_0014-0009	I	I COIN BOX I	11	16	-
	ZC_006_0014-0010	J	J COIN BOX J	11	16	-
COIN BOX (2 UNITS)	ZC_006_0014-0001	A	A COIN BOX A	11	16	-
	ZC_006_0014-0002	B	B COIN BOX B	11	16	-
	ZC_006_0014-0003	C	C COIN BOX C	11	16	-
	ZC_006_0014-0004	D	D COIN BOX D	11	16	-
	ZC_006_0014-0005	E	E COIN BOX E	11	16	-
	ZC_006_0014-0006	F	F COIN BOX F	11	16	-
	ZC_006_0014-0007	G	G COIN BOX G	11	16	-
	ZC_006_0014-0008	H	H COIN BOX H	11	16	-
	ZC_006_0014-0009	I	I COIN BOX I	11	16	-
	ZC_006_0014-0010	J	J COIN BOX J	11	16	-

## Kits for **STACK** dryers 11 - 16 kg

Kits available to include in configurable codes "18".

Factory assembly for machines ordered with their configurable code.

### ADVANCE

SAP CODE	NAME OF CHARACTERISTIC	DESCRIPTION	MODELS		€
19072542	IMC	Intelligent moisture control kit (*)	11	16	-
19072513	AF	Air inlet filter kit STACK	11	16	-
19068044	PR	Printer kit (*)	11	16	-
19072517	DS	Dosage kit (*)	11	16	-
12146879	-	Turbo silencer kit ø 200 (*)	11	16	-

\* Check prices at the list of accessories and spare parts.

### CONCEPT / Economic Line

SAP CODE	NAME OF CHARACTERISTIC	DESCRIPTION	MODELS		€
19072513	AF	Air inlet filter kit STACK	11	16	-
12146879	-	Turbo silencer kit ø 200 (*)	11	16	-
12227940	-	Programming console for Easy Control (M)	11	16	-

\* Check prices at the list of accessories and spare parts.

### Specific self-service kits

CODE	KIT DESCRIPTION	MODELS		€
19011224	100 TOKENS KIT	11	16	-
19035771	AUTOMATIC UNBLOCKAGE KIT	11	16	-
19045296	COIN BOX KIT (KEY A)	11	16	-
19045297	COIN BOX KIT (KEY B)	11	16	-
19045298	COIN BOX KIT (KEY C)	11	16	-
19045299	COIN BOX KIT (KEY D)	11	16	-
19045300	COIN BOX KIT (KEY E)	11	16	-
19045301	COIN BOX KIT (KEY F)	11	16	-
19045302	COIN BOX KIT (KEY G)	11	16	-
19045303	COIN BOX KIT (KEY H)	11	16	-
19045304	COIN BOX KIT (KEY I)	11	16	-
19045305	COIN BOX KIT (KEY J)	11	16	-
19059022	BLACK COIN MECHANISM KIT EUR+GBP	11	16	-
19059023	BLACK COIN MECHANISM KIT USA+MEX+CAN	11	16	-
19059024	BLACK COIN MECHANISM KIT CNY-TWD-HKD	11	16	-
19059026	BLACK COIN MECHANISM KIT TRY-PLN	11	16	-
19059025	BLACK COIN MECHANISM KIT AUD-NZD-JPY	11	16	-
19059027	BLACK COIN MECHANISM KIT RUB-ROB-CZK	11	16	-
19059028	BLACK COIN MECHANISM KIT MYR-SGD-IDR I (0.5)	11	16	-
19059033	BLACK COIN MECHANISM KIT MYR-SGD-IDR II (0.1-0.2-0.5)	11	16	-
19059029	BLACK COIN MECHANISM KIT ARS-CLP-BRL	11	16	-
19059030	BLACK COIN MECHANISM KIT VEF-PEN-COP	11	16	-
19059031	BLACK COIN MECHANISM KIT MAD-DZD-TND	11	16	-
19059032	BLACK COIN MECHANISM KIT KRW-PHP-THB	11	16	-
19059034	BLACK COIN MECHANISM KIT MECHANICAL TOKENS	11	16	-
19059035	BLACK COIN MECHANISM KIT MECHANICAL EUR	11	16	-
19059735	PAYMENT CENTRAL KIT	11	16	-

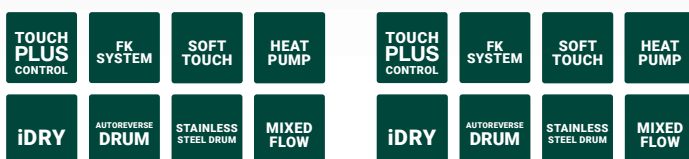
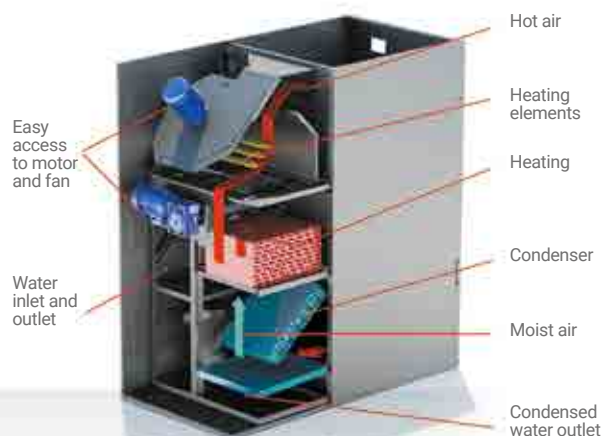
# Heat pump dryers

Efficient technology

Fagor presents their range of dryers with «high efficiency» and the greatest energy savings. The new heat pump dryers are a revolution in drying, allowing energy savings of up to 60%.

ADVANCE+

ADVANCE



01.

## Heat pump

Its technology makes it ideal for installation in places without access to the exterior of the building and for the self-service sector, and its design considerably simplifies installation.

There are three sizes per range:

SR-11 TP2 PLUS HP | SR-16 TP2 PLUS HP | SR-23 TP2 PLUS HP

SR-11 TP2 HP | SR-16 TP2 HP | SR-23 TP2 HP

# Heat pump dryers

11 - 16 - 23 kg



## General characteristics

- TOUCH PLUS CONTROL: colour touchscreen (7" on the ADVANCE+ range and 4,3' on the ADVANCE range).
- External steel casing with grey coating (skinplate), stainless steel, easy to clean finish.
- Large loading door (180° opening).
- Double glazed door as standard on the ADVANCE+ range.
- The iDRY function, the intelligent moisture detector, as standard (optional on the ADVANCE range).
- Reverse spin as standard on all models.
- Stainless steel drum as standard.
- Soft Touch: Axially and radially perforated drum for the gentle treatment of fabrics, and achieving improved air circulation.
- Lint filter at the bottom, more ergonomic, larger and improved airflow.
- Anti-crease system.
- 100% air recirculation: Advance + dryers do not require a vapour outlet to the outside. These models use water for refrigeration, which can be reused during washing. Low energy consumption.

## ADVANCE +

MODEL (#)	CODE (**)		CAPACITY KG		PRODUCTION KG/H	DRUM LITRES	DOOR Ø (MM)	POWER KW (*)				DIMENSIONS MM	€	
	STANDARD	WHIT OPTIONS	(1:18)	(1:22)				COMPRESSOR	MOTOR	VENTIL.	TOTAL (*)			
SR-11 TP2 PLUS HP	19071951	18003176	12	11	12	210	574	3,8	0,25	0,55	4,6	T	785x1.315x1.694	-
SR-16 TP2 PLUS HP	19071952	18003177	18	17	18	330	574	3,8	0,25	0,55	4,6	T	785x1.585x1.694	-
SR-23 TP2 PLUS HP	19071953	18003178	26	21	46	460	574	3,8	0,25	0,55	4,6	T	890x1.720x1.812	-

(\*\*): STANDARD Code: Use this code for orders of machines which do not include any option or version different to standard. The retail price is as indicated in the table.  
 WITH OPTIONS Code: Use this code for orders of machines which include any option or options from the table OPTIONS FOR DRYERS. The retail price is calculated by adding the price increases for each option to the retail price of the standard code.

(\*): Voltages and frequencies: T : Code for 230 V III - 400 V III +N

## ADVANCE

MODEL (#)	CODE (**)		CAPACITY KG		PRODUCTION KG/H	DRUM LITRES	DOOR Ø (MM)	POWER KW (*)				DIMENSIONS MM	€	
	STANDARD	WHIT OPTIONS	(1:18)	(1:22)				COMPRESSOR	MOTOR	VENTIL.	TOTAL (*)			
SR-11 TP2 HP	19071948	18003173	12	11	12	210	574	3,8	0,25	0,55	4,6	T	785x1.315x1.694	-
SR-16 TP2 HP	19071949	18003174	18	17	18	330	574	3,8	0,25	0,55	4,6	T	785x1.585x1.694	-
SR-23 TP2 HP	19071950	18003175	26	21	46	460	574	3,8	0,25	0,55	4,6	T	890x1.720x1.812	-

(\*\*): Código ESTÁNDAR: Usar este código para los pedidos de máquinas que no incluyan ninguna opción o versión diferente de la estándar. El PVP es el indicado en la tabla.  
 Código CON OPCIONES: Usar este código para los pedidos de máquinas que incluyan alguna opción u opciones de la tabla OPCIONES PARA SECADORAS. El PVP se calculará sumando al PVP del código estándar los incrementos por cada opción añadida.

(\*): Voltages and frequencies: T : Code for 230 V III - 400 V III +N

## Options for HEAT PUMP DRYERS 11 - 16 - 23 kg

Versions and options available to include in configurable codes "18".

Factory assembly for machines ordered with their configurable code.

### ADVANCE+

NAME OF CHARACTERISTIC	CODE	ABBREVIATION	DESCRIPTION	MODELS			€
REVERSE OPENING DOOR	ZC_006_0001-0001	RD	RD Reverse opening door 210-660	11	16	23	-
	ZC_006_0002-0011	SSC	Casing 210	11			-
	ZC_006_0002-0012	SSC	Casing 330		16		-
STAINLESS	ZC_006_0002-0013	SSC	Casing 460			23	-
	ZC_006_0002-0020	SSF	Front 210/330	11	16		-
	ZC_006_0002-0021	SSF	Front 460			23	-
NON-STANDARD PACKAGING	ZC_006_0006-0001	WB	Wooden packaging 210	11			-
	ZC_006_0006-0002	WB	Wooden packaging 330		16		-
	ZC_006_0006-0003	WB	Wooden packaging 460			23	-
VOLTAGE OPTIONS	ZC_006_0008-0041	230V 3~ 50 Hz 210-460 HP	230V 3~ 50 Hz 210-460 HP	11	16	23	-
	ZC_006_0008-0076	230V 3~ 50 Hz 210-460 HP	230V 3~ 50 Hz 210-460 HP	11 E	16 E		-
OPTIONAL FLUFF FILTER	ZC_006_0033-0002	F06	FLUFF F. 0.6 (NON STACK)	11	16	23	-
	ZC_006_0033-0003	F12	FLUFF F. 1.2 (ALL)	11	16	23	-
AIR INTAKE FILTER	ZC_006_0034-0001	AF	AIR INTAKE FILTER	11	16	23	-
TROPICALISED ELECTRONICS	ZC_006_0035-0001	TR	TROPICALISED	11	16	23	-
PRINTER	ZC_006_0037-0001	PR	PRINTER	11	16	23	-
DOSING	ZC_006_0038-0001	DS	DOSING	11	16	23	-

### ADVANCE

NAME OF CHARACTERISTIC	CODE	ABBREVIATION	DESCRIPTION	MODELS			€
REVERSE OPENING DOOR	ZC_006_0001-0001	RD	Reverse opening door 160-660	11	16	23	-
	ZC_006_0002-0011	SSC	Casing 210	11			-
	ZC_006_0002-0012	SSC	Casing 330		16		-
STAINLESS	ZC_006_0002-0013	SSC	Casing 460			23	-
	ZC_006_0002-0020	SSF	Front 210/330	11	16		-
	ZC_006_0002-0021	SSF	Front 460			23	-
DOUBLE GLAZED	ZC_006_0003-0001	DG	Door 210 to 460	11	16	23	-
MOISTURE CONTROL	ZC_006_0005-0001	IMC	Intelligent moisture control	11	16	23	-
NON-STANDARD PACKAGING	ZC_006_0006-0001	WB	Wooden packaging 210	11			-
	ZC_006_0006-0002	WB	Wooden packaging 330		16		-
	ZC_006_0006-0003	WB	Wooden packaging 460			23	-
VOLTAGE OPTIONS	ZC_006_0008-0041	230V 3~ 50 Hz 210-460 HP	230V 3~ 50 Hz 210-460 HP	11	16	23	-
	ZC_006_0008-0076	230V 3~ 50 Hz 210-460 HP	230V 3~ 50 Hz 210-460 HP	11 E	16 E		-
AIR INTAKE FILTER	ZC_006_0034-0001	AF	AIR INTAKE FILTER	11	16	23	-
TROPICALISED ELECTRONICS	ZC_006_0035-0001	TR	TROPICALISED	11	16	23	-
PRINTER	ZC_006_0037-0001	PR	PRINTER	11	16	23	-
SCREEN 7	ZC_006_0039-0001	Screen 7	Screen 7				-

## Fagor Industrial

NAME OF CHARACTERISTIC	CODE	ABBREVIATION	DESCRIPTION	MODELS					€
MODE OF PAYMENT	ZC_006_0030-0001	CP	CP PAYMENT CENTRAL 160/200	11	16	23	28	35	-
	ZC_006_0030-0017	CT	CT ONLY TOKENS 210-660	11	16	23	28	35	-
	ZC_006_0030-0018	CA	CA (EUR-GBP) 210-660	11	16	23	28	35	-
	ZC_006_0030-0019	CB	CB (USD-MXN-CAD) 210-660	11	16	23	28	35	-
	ZC_006_0030-0020	CC	CC (CNY-TWD-HKD) 210-660	11	16	23	28	35	-
	ZC_006_0030-0021	CD	CD (TRY-PLN) 210-660	11	16	23	28	35	-
	ZC_006_0030-0022	CE	CE (AUD-NZD-JPY) 210-660	11	16	23	28	35	-
	ZC_006_0030-0023	CF	CF (RUB-ROB-CZK) 210-660	11	16	23	28	35	-
	ZC_006_0030-0024	CG	CG (MYR-SGD-IDR) I 210-660	11	16	23	28	35	-
	ZC_006_0030-0025	CH	CH (MYR-SGD-IDR) II 210-660	11	16	23	28	35	-
	ZC_006_0030-0026	CI	CI (ARS-CLP-BRL) 210-660	11	16	23	28	35	-
	ZC_006_0030-0027	CJ	CJ (VEF-PEN-COP) 210-660	11	16	23	28	35	-
	ZC_006_0030-0028	CK	CK (MAD-DZD-TND) 210-660	11	16	23	28	35	-
	ZC_006_0030-0029	CL	CL (KRW-PHP-THB) 210-660	11	16	23	28	35	-
	ZC_006_0030-0030	CN	CN (EUR MECANICO) 210-660	11	16	23	28	35	-
COIN BOX	ZC_006_0014-0001	A	A COIN BOX A	11	16	23	28	35	-
	ZC_006_0014-0002	B	B COIN BOX B	11	16	23	28	35	-
	ZC_006_0014-0003	C	C COIN BOX C	11	16	23	28	35	-
	ZC_006_0014-0004	D	D COIN BOX D	11	16	23	28	35	-
	ZC_006_0014-0005	E	E COIN BOX E	11	16	23	28	35	-
	ZC_006_0014-0006	F	F COIN BOX F	11	16	23	28	35	-
	ZC_006_0014-0007	G	G COIN BOX G	11	16	23	28	35	-
	ZC_006_0014-0008	H	H COIN BOX H	11	16	23	28	35	-
	ZC_006_0014-0009	I	I COIN BOX I	11	16	23	28	35	-
	ZC_006_0014-0010	J	J COIN BOX J	11	16	23	28	35	-



## Kits for HEAT PUMP DRYERS 11 - 16 - 23 kg

Kits available to include in configurable codes "18".

Factory assembly for machines ordered with their configurable code.

### ADVANCE+

SAP CODE	NAME OF CHARACTERISTIC	DESCRIPTION	MODEL			€
19068044	PR	Printer kit	11	16	23	-
19072517	DS	Dosage kit	11	16	23	-
12146879	-	Turbo silencer kit ø200	11	16	23	-

\* Check prices at the list of accessories and spare parts.

### ADVANCE

SAP CODE	NAME OF CHARACTERISTIC	DESCRIPTION	MODEL			€
19072542	IMC	Intelligent moisture control kit	11	16	23	-
19068044	PR	Printer kit	11	16	23	-
12146879	-	Turbo silencer kit ø200	11	16	23	-

\* Check prices at the list of accessories and spare parts.

### Specific self-service kits

CODE	KIT DESCRIPTION	MODELS				€
19011224	100 TOKENS KIT	11	14	18	25	-
19035771	AUTOMATIC UNBLOCKAGE KIT	11	14	18	25	-
19045296	COIN BOX KIT (KEY A)	11	14	18	25	-
19045297	COIN BOX KIT (KEY B)	11	14	18	25	-
19045298	COIN BOX KIT (KEY C)	11	14	18	25	-
19045299	COIN BOX KIT (KEY D)	11	14	18	25	-
19045300	COIN BOX KIT (KEY E)	11	14	18	25	-
19045301	COIN BOX KIT (KEY F)	11	14	18	25	-
19045302	COIN BOX KIT (KEY G)	11	14	18	25	-
19045303	COIN BOX KIT (KEY H)	11	14	18	25	-
19045304	COIN BOX KIT (KEY I)	11	14	18	25	-
19045305	COIN BOX KIT (KEY J)	11	14	18	25	-
19059022	BLACK COIN MECHANISM KIT EUR+GBP		14	18	25	-
19059023	BLACK COIN MECHANISM KIT USA+MEX+CAN	11	14	18	25	-
19059024	BLACK COIN MECHANISM KIT CNY-TWD-HKD	11	14	18	25	-
19059026	BLACK COIN MECHANISM KIT TRY-PLN	11	14	18	25	-
19059025	BLACK COIN MECHANISM KIT AUD-NZD-JPY	11	14	18	25	-
19059027	BLACK COIN MECHANISM KIT RUB-ROB-CZK	11	14	18	25	-
19059028	BLACK COIN MECHANISM KIT MYR-SGD-IDR I (0.5)	11	14	18	25	-
19059033	BLACK COIN MECHANISM KIT MYR-SGD-IDR II (0.1-0.2-0.5)	11	14	18	25	-
19059029	BLACK COIN MECHANISM KIT ARS-CLP-BRL	11	14	18	25	-
19059030	BLACK COIN MECHANISM KIT VEF-PEN-COP	11	14	18	25	-
19059031	BLACK COIN MECHANISM KIT MAD-DZD-TND	11	14	18	25	-
19059032	BLACK COIN MECHANISM KIT KRW-PHP-THB	11	14	18	25	-
19059034	BLACK COIN MECHANISM KIT MECHANICAL TOKENS	11	14	18	25	-
19059035	BLACK COIN MECHANISM KIT MECHANICAL EUR	11	14	18	25	-
19059735	PAYMENT CENTRAL KIT	11	14	18	25	-



# Payment Systems and accessories

Payment Systems .....	265
— Fagor Pay Station .....	266
— Pay Station .....	267

Special models or any other variant on the standard model are to be assembled in factory, and carry a supplement over the price indicated for the standard model.

Please consult Fagor Industrial for any other variant or option not reflected on this list.



# Payment Systems

The basic models of industrial washers and dryers for self-service are prepared for connection to a pay station.

The self-service versions with electronic token/coin mechanism or token mechanism kit are obtained by connecting one of the two kits for these options to the basic self-service model. The Kit is easy to install at start up.

## Different payment options

### Pay Station:

The machine, in the form it arrives as standard, can work with any pay station system.

If you wish to remove the emergency stop push button, you can request the kit "Pay station without STOP push button".

### Electronic Coin Mechanism Kit:

Lets you alternate between coins and tokens, and comes prepared for the currencies indicated in the table, by country and zone.

### Token mechanism kit:

Allows operation with tokens only.

## Washer control panel conversions from the standard version, for pay station.



**STANDARD CONTROL PANEL**  
Valid for connection to Pay Station



**DISASSEMBLY OF THE "Emergency STOP push button" MODULE**



**"WITHOUT STOP PUSH BUTTON" CONTROL PANEL**  
Valid for connection to Pay Station



**ASSEMBLY OF THE "TOKEN MECHANISM - COIN MECHANISM" KIT AND OF THE COIN BOX**



**"TOKEN MECHANISM - COIN MECHANISM" CONTROL PANEL**

# Fagor pay station

For self-service laundrettes



## Technical data of the equipment

- Metallic construction in 2.0 mm thick sheet, high-resistance epoxy paint, dried in the oven.
- Dimensions: 595 x 420 x 760 mm (length x depth x height).
- Approximate weight: 65 kg.
- Power source: 230 1+N 50 Hz. Power: 275 W.
- High-security lock.
- Alarm plate with front door lock.
- System to anchor the machine to the floor/ wall or embed it, includes a rear access.
- CE certified

## Devices of which the equipment is composed

- Industrial PC. SO W7P.
  - 17" TFT anti-vandal touch screen (6mm thick).
  - Anti-lead coiner, from €0.05 to €2.00.
  - Hopper with change return, self-powered, capacity up to 1,500 coins, depending on their value.
  - Banknote reader taking notes from €5 to €20. Stacker up to 550 units.
  - Card dispenser with Mifare contactless PVC card reader/recorder.
  - Thermal ticket printer with capacity for 140 m roll.
  - Control electronics that can control up to 16 machines by pulses (can be increased).
- OPTIONS INCLUDED WITH THE CENTRAL:
- 1 Unit Connection box for 8 machines.
  - 1 Unit Set-up kit for 8 machines.
  - 1 Unit Box of 200 Mifare ISO PVC contactless cards.

PART	CODE	€
Fagor payment central for 8 machines	19048710	-
Options:		
Bank payment module (ingenico contactless no pin pos - maximum amount €20)	19047080	-
Neutral prepaid cards (200 units)	19047082	-
Prepaid cards printed on one side (200 units)	19047083	-
Prepaid cards printed on two sides (200 units)	19047084	-
Payment central base	19047085	-
Box 20 rolls of one-sided thermal paper for printer (60x120x12 mm - 180 m)	19047086	-
Customer-personalised front	19047087	-
Increase to 8 machines (set-up kit)	19047088	-

COMMENTS:

Assembly kit composed of:

- 1 Unit Keyboard + Wireless mouse set.
- 8 Unit Cable Screen Flex 4 x 0.5; 25 m each.
- 3 Unit PVC block + 35 mm M8 screw.
- 1 Unit Pay station administration card.

Installation not included in the prices.

## “Box wash” pay station

Simple station for self-service laundrettes



Simple pay station capable of handling up to 6 machines, offering modes of payment by prepaid card and cash.

- Electronic board for better management of the service to charge, able to work in various different ways (timed, pulse, or with end of cycle signal).
- Bookkeeping on electronic board, with a subtotal and total money inserted.
- Easy to change the prices of products, or the mode of operation.
- Easy assembly
- Accepts up to 6 different coins or tokens for 1 sales price.
- Front opening for collection.
- Supplied with coin mechanism (the currency must be specified in the order) and loyalty key or card reader.

PART	DIMENSIONS (MM)	€
Box wash pay station	19056194 200 X 200 x 400	-
Options:		
Rechargeable loyalty cards (set of 100 units) - rft card	19020953	-

# Furniture for self-service



COMPONENTS	CODE	€
1 Work-surface counter	19074101	-
2 Column unit	19074102	-
3 LED sign	19074103	-





	COMPONENTS	CODE	€
4	Dispensing cabinet	19074089	-
	Dispensing kit 2 machines.	19073654	-
5	Dispensing kit 4 machines.	19073655	-
	Dispensing kit 6 machines.	19073656	-

Dispensing unit for 2, 4 and 6 machines, with two chemical products. Use the machine program signal to activate the dispensing unit.





# Laundry2go

System of transportable modules ..... 273

Special models or any other variant on the standard model are to be assembled in factory, and carry a supplement over the price indicated for the standard model.

Please consult Fagor Industrial for any other variant or option not reflected on this list.

# Laundry2go





### Module with awning

MODEL	CODE	MACHINES TO INCLUDE			€*	
1	Module K with awning	Consult	SR-16	LA-18	LAP-10	-
			Coin mechanism and coin box kit	Coin mechanism and coin box kit	Coin mechanism and coin box kit	
2	Module P with awning	Consult	LAP-10 + SRP-10	LAP-10 + SRP-10	LAP-10 + SRP-10	-
			Coin mechanism and coin box kit	Coin mechanism and coin box kit	Coin mechanism and coin box kit	

\* Price not including machines

### Closed module

MODEL	CODE	MACHINES TO INCLUDE			€*	
3	Closed module K	Consult	SR-16	LA-18	LAP-10	-
			Coin mechanism and coin box kit	Coin mechanism and coin box kit	Coin mechanism and coin box kit	
4	Closed module P	Consult	LAP-10 + SRP-10	LAP-10 + SRP-10	LAP-10 + SRP-10	-
			Coin mechanism and coin box kit	Coin mechanism and coin box kit	Coin mechanism and coin box kit	

\* Price not including machines

### Option available in all modules

MODEL	CODE	€
Gas cylinders cabinet	Consult	-

# Laundry2go

## Design your module

Choose the configuration options that best meet your needs.

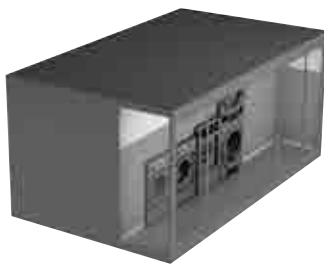
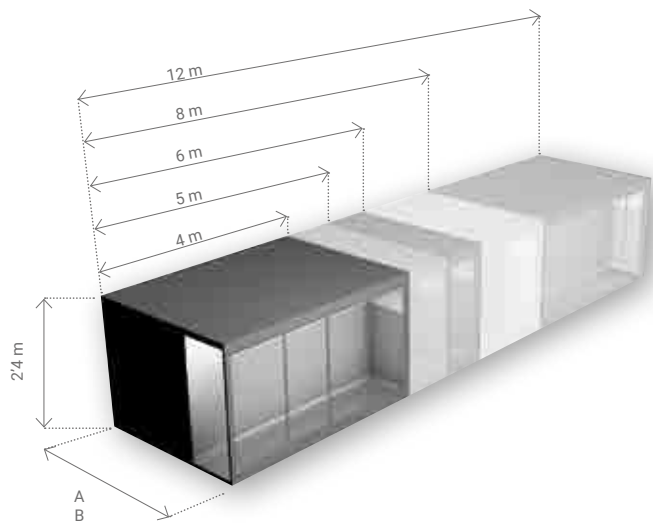
### Dimensions / type of transport



**Maritime transport**  
A: 2.35 m



**Land transport**  
B: 3 m  
(more usual)



CLOSED



OPEN



DOUBLE

### Build certificate and EEC certificates

Metal structure manufactured according to Regulation (EU) No 305/2011 of the European Parliament and of the Council of 9 March 2011 laying down harmonised conditions for the marketing of construction products, for the Control of Production in Factory of Metal Structures for the EC Market, and the scope of which is the Design, manufacture and assembly of metal construction and structures.

Follow-up and inspection is carried out by the certification body TÜV Rheinland; granting the Control of Production in Factory (CPF) conformity certificate, based on regulation UNE-EN 1090 :2011+A1 Execution of steel structures and aluminium structures.

**Part 1:** Requirements for the assessment of conformity of structural components.

**Part 2:** Technical requirements for the execution of steel structures. EXC-3 2+



## Design the interior

The standard module has been designed to be very bright, with a front façade that allows the elegance of its interior to be seen.



## Washers



8 / 10 Kg

PROFESSIONAL WASHERS



11 / 14 / 18 / 25 Kg

HIGH SPEED WASHERS



11 / 14 / 18 / 25 Kg

MEDIUM SPEED WASHERS  
LOW SPEED WASHERS

## Dryers



8 / 10 Kg

PROFESSIONAL DRYERS



11 / 16 / 23 / 28 Kg

ADVANCE DRYERS



11 / 16 Kg

DOUBLE STACKING DRYERS



11 / 16 / 23 Kg

HEAT PUMP DRYERS

## Additional personalisation options

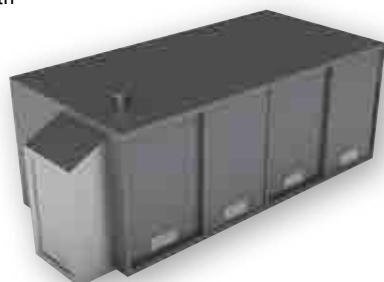
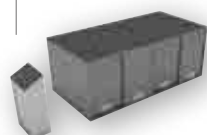
There are other options available to complete the personalisation of your module, such as the colour of the structure, accessories, etc.

### - HEATING SYSTEM OF THE WATER

(electric, natural gas or propane gas).

- Propane gas side compartment
- Air conditioning.
- Double panel door.
- Access ramp for people with disabilities.
- Extra grills for domotic ventilation.
- Stainless steel structure.

PROPANE GAS  
SIDE COMPARTMENT



## Auxiliary machines



Pay stations coin

Payment kit

lot connection kit

