



Ironing and folding



Quality ironing recognised by users



Unique solutions for any space

Fagor presents a wide range of wall-flatwork ironer, the perfect and innovative solution for drying, ironing and folding flatwork, for every type of customer.

Fagor flatwork ironers are designed to offer optimum performance and productivity with significant energy efficiency options and savings in time. For example, the Smart system (moisture control), the new Control Touch Plus TP2 (only in Ø 500/650 mm models) and the multiple notable features: radiant gas burner, rear delivery, length folder, connectivity, versatility, etc.

There are four main ranges: Ø 200 and 325 mm / Ø 500 and 650 mm.

FLATWORK IRONERS Ø 200				
ROLLER DIAMETER	HEATING	ROLLER LENGTH		
		1400 mm	1600 mm	2000 mm
Ø 200 mm	Electric	PS-20/140 M	PS-20160 M	PS-20/200 M

FLATWORK IRONERS Ø 325				
ROLLER DIAMETER	HEATING	ROLLER LENGTH		
		1400 mm	1600 mm	2000 mm
Ø 325 mm	Electric and gas	PS-35/140 M	PS-35/160 M	PS-35/200 M

FLATWORK IRONERS Ø 325 - PLUS				
ROLLER DIAMETER	HEATING	ROLLER LENGTH		
		2000 mm	2600 mm	3300 mm
Ø 325 mm	Electric and gas	PS-35/200 M PLUS	PS-35/260 M PLUS	PS-35/330 M PLUS

FLATWORK IRONERS Ø 500				
ROLLER DIAMETER	HEATING	ROLLER LENGTH		
		2000 mm	2600 mm	3300 mm
Ø 500 mm	Electric, gas and steam	PS-50/200 TP2	PS-50/260 TP2	PS-50/330 TP2
Ø 500 mm	With rear exit With lengthfolder	PS-50/200 TP2	PS-50/260 TP2	PS-50/330 TP2

FLATWORK IRONERS Ø 650				
ROLLER DIAMETER	HEATING	ROLLER LENGTH		
		2000 mm	2600 mm	3300 mm
Ø 650 mm	Electric, gas and steam	PS-65/200 TP2	PS-65/260 TP2	PS-65/330 TP2
Ø 650 mm	With rear exit With lengthfolder	PS-65/200 TP2	PS-65/260 TP2	PS-65/330 TP2

DRYING - IRONING

Designed to meet the needs of hotels, healthcare institutions, residential care homes and laundries.



FLATWORK IRONER **Ø 200 mm**

- Drying and ironing in one single operation.
- Front feed and delivery of linen.
- Stainless steel and grey skin plate panels.
- Working width 1,40 m / 1,60 m / 2 m.
- New M control easy-to-use.
- Nomex belts as standard.
- Ironing speed: 1,5-6 mts/min.
- Better collection of the linen.
- Easy installation.

DRYING - IRONING



FLATWORK IRONER **Ø 325 mm**

- Drying and ironing in one single operation.
- Front feed and delivery of linen.
- Stainless steel and skin plate panels.
- Ø 325 mm models with electric and gas heating.
- Working width 1,40 m / 1,60 m / 2 m.
- New M control easy-to-use.
- Ironing speed: 1,5-10 mts/min.
- Reverse roll standard.

OPTIONS

- Smart system: moisture control.
- Nickel-plated cylinder.

FLATWORK IRONER PLUS **Ø 325 mm**

- Drying and ironing in one single operation.
- Front feed and delivery of linen.
- Stainless steel and skin plate panels.
- Ø 325 mm models with electric and gas heating.
- Working width 2 m./ 2,60 m/ 3 m.
- Control: microprocesador M de fácil uso.
- Ironing speed: 1,5-12 mts/min.
- Reverse roll standard.

OPTIONS

- Smart system: moisture control.
- Nickel-plated cylinder.

M Control

- **2 selectable operating modes:**
 - **Manual Mode:** selection of speed and temperature.
 - **Auto Mode:** automatic adjustment of the ironing speed according to the temperature selected.

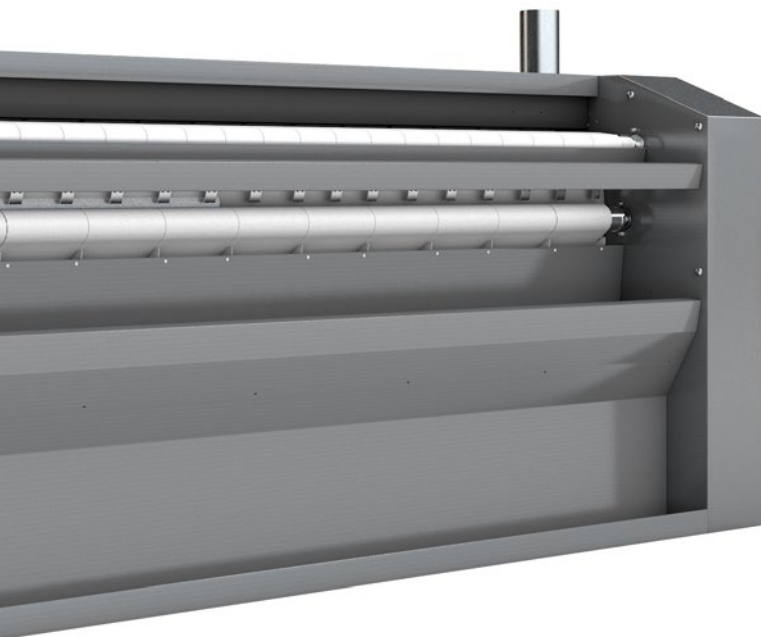


Robust

- **Roller with inverter:** delicate operation to prevent wear of belts and mechanical elements.
- **Panels in skin plate and stainless steel:** long-lasting.
- **Nomex feed and ironing belts: resistant to high temperatures.**
- **Option:** nickel-plated cylinder: anti corrosive, more durable (not available in model 200 mm).

Efficiency

- **Smart-System:** automatic adjustment of ironing speed according to residual moisture, energy saver (option in Ø 320 mm).
- **Excellent heat conduction** thanks to roller fabric and thickness: increased control of energy dissipation.
- **Automatic stop at 80 °C:** extends lifetime of ironing belts.
- Gas circuit in lower section, reducing energy consumption.
- Precise temperature control thanks to the microprocessor: low energy consumption.
- Models with **radiant gas burner:** production increased by 25%, savings in time and energy.



Ergonomics

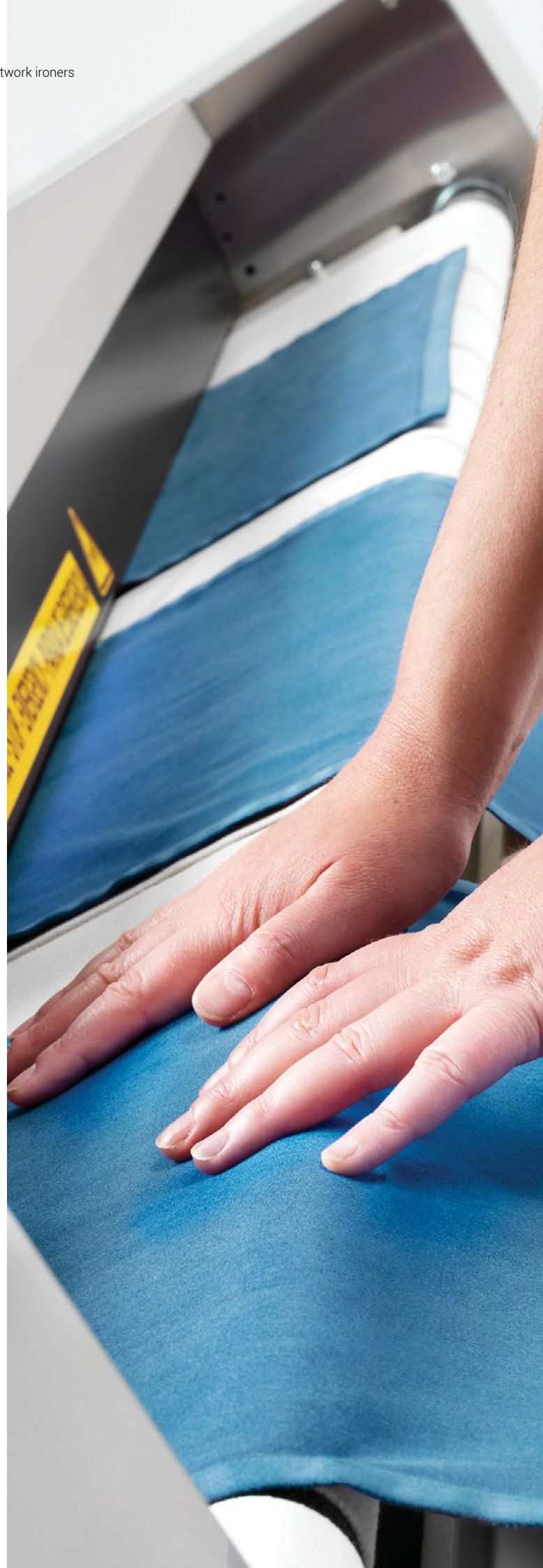
- **Acoustic comfort:** max 65 dB.
- Skin plate and stainless steel panels: easy to clean, more hygienic.
- Stainless steel trays.
- **Height adjusted for feeding:** 990 mm.
- **Small size:** compact design to save space.

Versatility

- Radiant gas model: flexibility for increased production and better adaptation to high altitudes.

Maintenance

- **Easy access to all the components** on both sides of the machine.
- **Compact design:** fits in many different spaces, the optional ironer is also included in the unit.



M Control

A simple, precise and intuitive microprocessor.

01

M Control, easy-to-use and user friendly

2 selectable operating modes:

AUTO MODE - Selection of speed and temperature.

MANUAL MODE – Automatic adjustment of the ironing speed according to the temperature selected.

02

Adjustable ironing speed

Adjustable ironing speed from 1 to 12 m/min. (*check technical data chart).

03

Precise working temperature

Adjustable temperature from 1 to 180°C (Max).
Recommended working temperature is 160°C.

Robust

Designed to be long-lasting.

01

Roller with frequency variator

Gentle operation to prevent the wear of the belts and other mechanical elements.

02

Stainless steel and skin plate panels

Long-lasting.

03

Feeding and ironing belts in NOMEX

Resistant to high temperatures.

04

Nickel-plated cylinder optional

Anti-corrosion and long-lasting.



Efficiency

The new flatwork ironers are equipped with features to save energy and time.

01

Smart System

Automatic adjustment of ironing speed according to residual moisture, energy saver (optional in Ø 325 mm).

02

Good heat conduction

Thanks to the roller fabric and thickness: greater control of energy dissipation.

03

Automatic shutdown at 80 °C

Extends the belt lifetime.

04

Reduction of energy consumption

Via the smoke circuit through the lower section.

05

Gas model with radiant burner

Increases production by 25%, offering savings in time and energy.



Ergonomics

FAGOR seeks user comfort the operator.

01

Acoustic comfort

65 dba max.

02

Compact design

Saves space, fits in many premises.

03

Panels in skin plate and stainless steel:

Easy to clean, more hygienic (complies with RABC standard).

04

Easy-to-use microprocessors

M Control with speed and temperature selection.

05

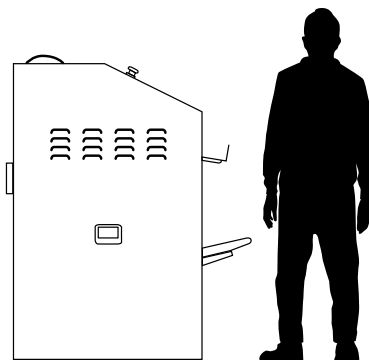
Height adjusted to feeding of linen

990 mm.

06

Motor with variator

Provides gentle and gradual acceleration.



Maintenance

Fagor flatwork ironers are designed to offer the customer easy maintenance and repairs.

01

Single electric connection and steam outlet

02

Compact dimensions

Fits in any space.

03

Easy access to all the components

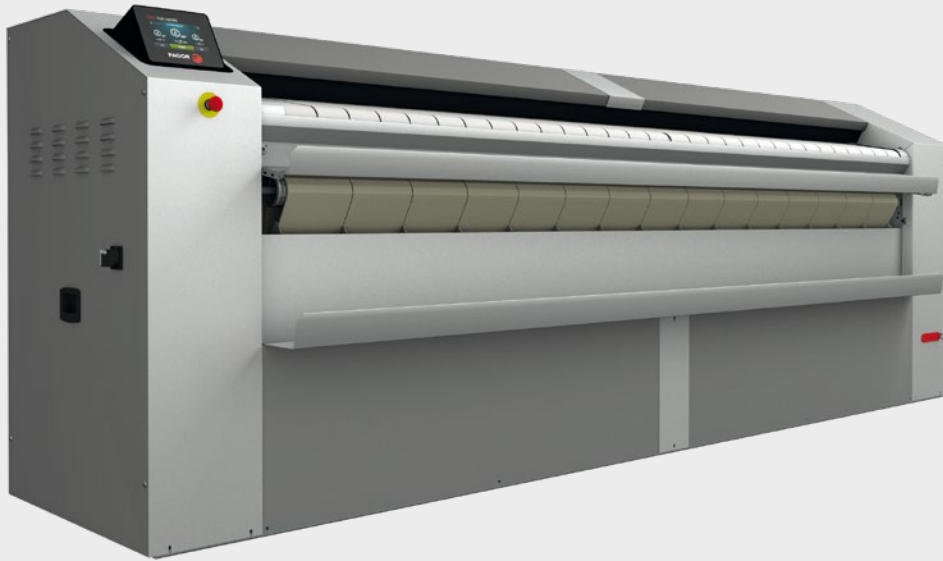
On both sides of the machine.

Technical data

		Ø 200				Ø 325					
UNIT.		PS-20/140	PS-20/160	PS-20/200	PS-35/140	PS-35/160	PS-35/200	PS-35/20 PLUS	PS-35/260 PLUS	PS-35/330 PLUS	
GENERAL DETAILS											
Theoretical production 45% humidity	Electric heating	Kg/h	10-12	13-15	19-21	10-20	20-30	30-40	45-50	55-60	80-85
	Atmo. gas heating	Kg/h	-----	-----	-----	15-18	25-30	35-40	-----	-----	-----
	Radiant gas heating	Kg/h	-----	-----	-----	-----	-----	-----	60-65	75-80	100-105
Evaporation power	l/h	8-10	20-30	30-40	7-14	14-21	21-28	21-30	23-34	34-45	
Roll Ø	mm	200	200	200	325	325	325	325	325	325	
Working width	mm	1400	1600	2000	1400	1600	2000	2000	2600	3300	
Height floor-feeding belts	mm	990	990	990	990	990	990	990	990	990	
Working speed	mt/min	1.5-6	1.5-6	1.5-6	1.5-10	1.5-10	1.5-10	1,5-12	1,5-12	1,5-12	
Control		M				M			M		
No. Programs	Nº	2 standard modes				2 standard modes			2 standard modes		
Rear exit + length folder	Nº	No	No	No	No	No	No	No	No	No	
Large surface contact with linen	º	270	270	270	270	270	270	270	270	270	
POWER											
Electric	Heating power	kW	10,5	12	18	12	16,2	21	31,5	40,5	54
	Total electric power	kW	10,84	12,34	18,37	12,37	16,57	21,49	32,02	41,02	54,52
Gas	Heating power	kW	-----	-----	-----	14	22,5	30	40	55	69
	Total electric power	kW	-----	-----	-----	0,37	0,37	0,49	0,52	0,52	0,52
Roll motor power	kW	0,28	0,28	0,28	0,28	0,28	0,28	0,37	0,37	0,37	
Fan motor power	kW	0,09	0,09	0,09	0,12	0,12	0,12 x2	0,12 x 2	0,12 x 2	0,12 x 2	
CONNECTIONS											
Ø Gas inlet	BSP	-----	-----	-----	1/2"	1/2"	1/2"	1/2"	1/2"	1/2"	
NET DIMENSIONS											
Width	mm	1878	2128	2478	1952	2202	2552	2552	3202	3852	
Depth (without trays)	mm	444* (666)	444*(666)	444*(666)	686	686	686	686	686	686	
Height	mm	1110	1110	1110	1112	1112	1112	1112	1112	1112	
Weight	Kg	180	203	237	330	385	435	435	545	655	
PACKING DIMENSIONS											
Width	mm	2130	2340	2780	2340	2340	2780	2780	3430	3980	
Depth (without trays)	mm	770	770	770	770	770	770	770	770	770	
Height	mm	1400	1400	1400	1400	1400	1400	1400	1400	1400	
Weight	Kg	220	240	275	365	405	458	458	585	700	
Volume	m³	2,30	2,52	3,00	2,52	2,52	3,00	3,00	3,70	4,29	
OTHERS											
Fume outlet	Nº	1	1	1	1	1	2	2	2	2	
Ø Fume outlet	mm	83	83	83	98	98	98	98	98	98	
Air flow	m³/h	300	300	300	500	500	1000	1000	1000	1000	
Noise Level	dB	55	55	55	60	60	63	63	63	63	

*Fagor reserves the right to modify the technical data without notice.

DRYING - IRONING - FOLDING (OPT.)



FLATWORK IRONER **Ø 500 mm**

- Drying and ironing in one single operation.
- Front feed and delivery of linen.
- Heating: electric, gas (radiant or atmospheric burner) and steam.
- Roller width: 2 m / 2.60 m / 3.30 m.
- Control: new Touch Plus 2 (TP2) microprocessor with 7" touch screen (5 predefined programmes).
- Inversion of standard roller.

OPTIONS

- Smart system.
- HPS system: high production system.
- Length folder incorporated.
- Rear delivery (only available with the folder).
- Nickel-plated cylinder.

DRYING - IRONING - FOLDING (OPT.)



FLATWORK IRONER **Ø 650 mm**

- Drying and ironing in one single operation.
- Front feed and delivery of linen.
- Heating: electric, gas (radiant or atmospheric burner) and steam.
- Roller width: 2 m / 2.60 m / 3.30 m.
- Control: new Touch Plus 2 (TP2) microprocessor with 7" touch screen (5 predefined programmes).
- Inversion of standard roller.
- Smart system.
- HPS system: high production system.

OPTIONS

- Length folder incorporated.
- Rear delivery (only available with the folder).
- Nickel-plated cylinder.

Touch Plus TP2 control

- **Easy-to-use and totally programmable 7" touch screen.**
- **38 languages available.**
- **5 predefined programmes**, option to create infinite number.
- **Inversion of roller rotation.**
- **FagorKconnect**: connectivity.
- **USB connection.** Free PC software for programming, traceability, data analysis...

Robust

- **Roller with inverter**: delicate operation to prevent wear of belts and mechanical elements.
- **Panels in skin plate and stainless steel:** long-lasting.
- **Nomex feed and ironing belts: resistant to high temperatures.**
- **Option:** Nickel-plated cylinder, anti-corrosion and longer-lasting.

FagorKconnect

- **Remote technical service.** Monitoring of machines, error notification, management, traceability and statistics. Remote desktop and data recovery for technical service, after sales, software updates, etc.
- **Laundry management:**
The IoT solution allows you to manage your laundry (create customer discount programmes, view statistics, traceability and monitor your business).

Efficiency

- **Smart-System:** automatic adjustment of ironing speed according to residual moisture, energy saver (option in Ø 500 mm).
- **HPS system:** automatic adjustment of ironing speed, reduced while feeding linen and increased for more production, up to 15 m/min (option in Ø 500 mm).
- **Excellent heat conduction** thanks to roller fabric and thickness: increased control of energy dissipation.
- **Automatic stop at 80 °C:** extends lifetime of ironing belts.
- Gas circuit in lower section, reducing energy consumption.
- Precise temperature control thanks to the microprocessor: low energy consumption.
- Models with **radiant gas burner:** production increased by 25%, savings in time and energy.

Ergonomics

- **Acoustic comfort:** max 65 dB.
- Skin plate and stainless steel panels: easy to clean, more hygienic.
- Stainless steel trays.
- **Height adjusted for feeding:** 1.120 mm.
- **Small size:** compact design to save space.

Versatility

- **Rear delivery**
(option only with the length folder).
- **Length folder incorporated** (optional).
- Option to add a cross folder and stacker.
- Radiant gas model: flexibility for increased production and better adaptation to high altitudes.

Maintenance

- **Easy access to all the components** on both sides of the machine.
- **Compact design:** fits in many different spaces, the optional ironer is also included in the unit.
- Ironing trays for easy maintenance.
- **A single electric connection and smoke output.**
- **Remote communication:** better and faster technical service.



Programmable Touch Plus TP2 microprocessor

A microprocessor designed to offer efficiency, versatility and connectivity.

01

Programmer and easy-to-use and totally programmable 7" touch screen



02

38 languages

Easy to configure, thanks to the Fagor goal to be accessible to everyone.

03

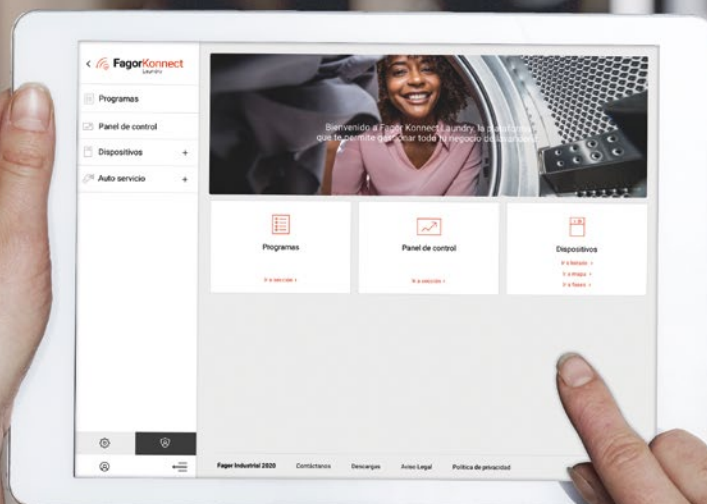
USB connection

Free PC software for programming, traceability, data analysis...

04

IoT
FagorKonnect

Allows you to receive information via the cloud on your mobile device about traceability and statistics for good analysis and to ensure MAXIMUM HYGIENE.



Robust

Designed to be long-lasting.

01

Roller with frequency variator

Gentle operation to prevent the wear of the belts and other mechanical elements.

02

Stainless steel and skin plate panels

Long-lasting.

03

Feeding and ironing belts in NOMEX

Resistant to high temperatures.

04

Nickel-plated cylinder optional

Anti-corrosion and long-lasting.



Efficiency

The new flatwork ironers are equipped with features to save energy and time.

01

Smart System

Automatic adjustment of ironing speed according to residual moisture, energy saver (optional in Ø500 mm, standard in in Ø650 mm).

02

HPS system

Option to configure 3 levels of saving, standard.



03

Good heat conduction

Thanks to the roller fabric and thickness: greater control of energy dissipation.

04

Automatic shutdown at 80 °C

Extends the belt lifetime.

05

Reduction of energy consumption

Via the smoke circuit through the lower section.

06

Gas model with radiant burner

Increases production by 25%, offering savings in time and energy.

07

Precise control of temperature

Thanks to the microprocessor (except in steam mod.): low energy consumption.



FagorKonnnect



01

Distributors

As a distributor, good customer service reflects on your good image and their loyalty.

The **FagorKonnnect** solution gives added value to the machines and to your business, with multiple benefits at your convenience: an argument in favour of why your customers should choose Fagor machines.

02

Owners

FagorKonnnect gives you the peace of mind of having control of your business. All you need to do is connect your machines to internet (using an Ethernet cable) and you can supervise your business from home or the office, without physically travelling to the laundry.

Customers require reliability and efficiency, and you want to offer them this. Traceability of the washing and drying cycles is vital for ensuring **maximum hygiene**.

Configura los dashboards, perfiles y Configure the dashboards, profiles and graphs which best help you to assess and closely monitor your business or businesses in real time. You can view historical or progress data, by machine or groups.

03

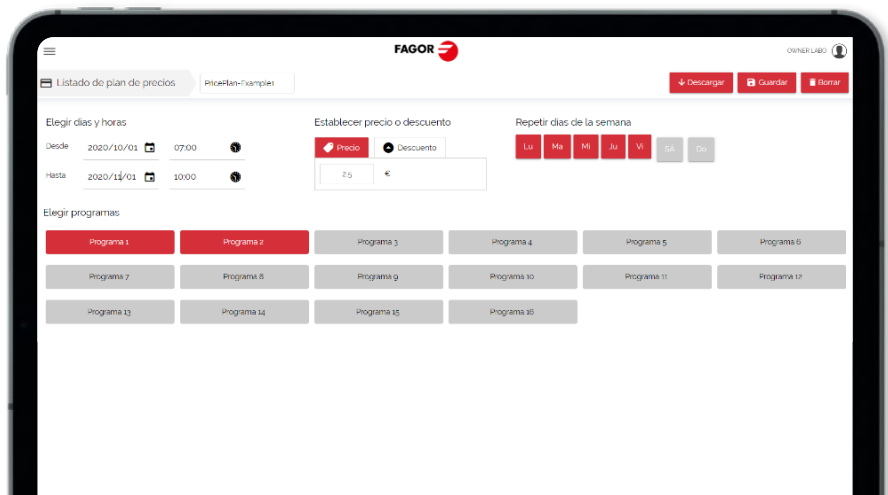
Technical service

Remote information about the state of the machine, error reports, historical data, to facilitate instant diagnosis and software updates at any time, and to reduce the need for on site visits and technical intervention.

04

FagorKonnnect

You will receive current and historical data about the machines, their operation, the current state and much more, so that you can offer optimum support to your customer.



Versatility

New models with rear delivery and length folder to meet every need.

01

Rear delivery

Optionally with the length folder incorporated into the unit.

02

Length folder incorporated

Same dimensions for Ø 500 and 650 mm models, as option.

03

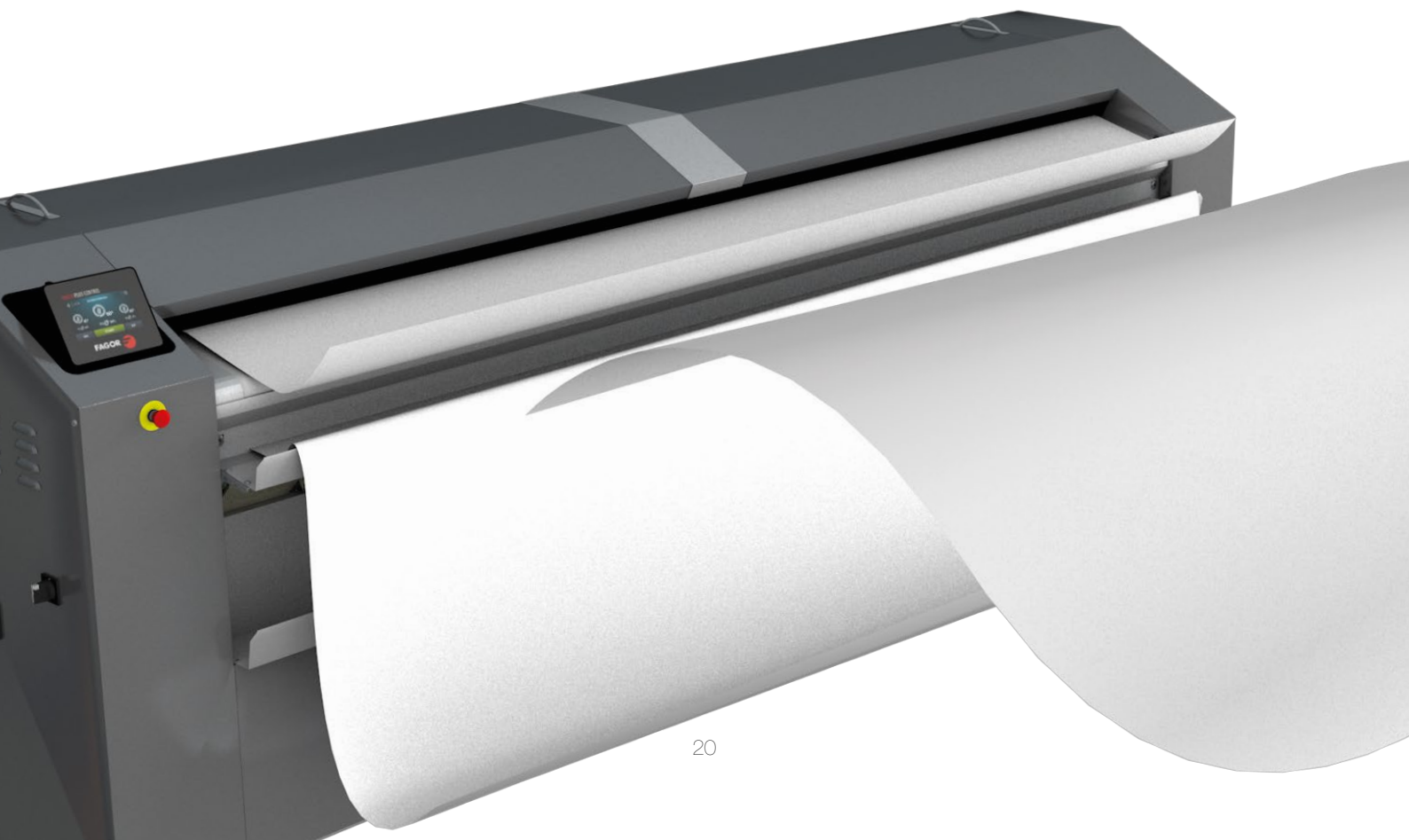
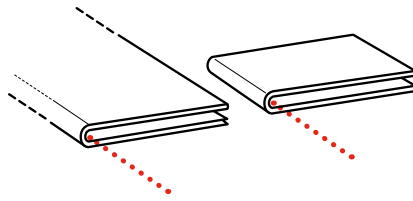
Cross folder

Possibility to add independent cross folder and stacker to increase productivity (only models with rear delivery and folder).

04

Radiant gas burner

Flexibility for improved production and adaptation to high altitudes, with less oxygen.



Ergonomics

Fagor seeks user comfort the operator.

01

Acoustic comfort

65 dba max.

02

Compact design

Saves space, fits in many premises.

03

Panels in skin plate and stainless steel

Easy to clean, more hygienic (complies with RABC standard).

04

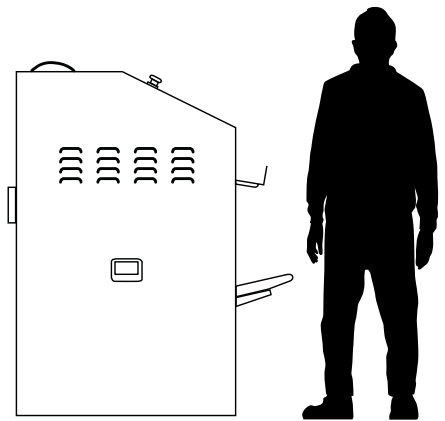
Easy-to-use microprocessors

Control Touch Plus 2, fully programmable.

05

Height adjusted to feeding of

1120 mm.



06

Motor with variator

Provides gentle and gradual acceleration.



Maintenance

Fagor flatwork ironers are designed to offer the customer easy maintenance and repairs.

01

Single electric connection and steam outlet

02

Compact dimensions

Fits in any space.

03

Easy access to all the components

On both sides of the machine.

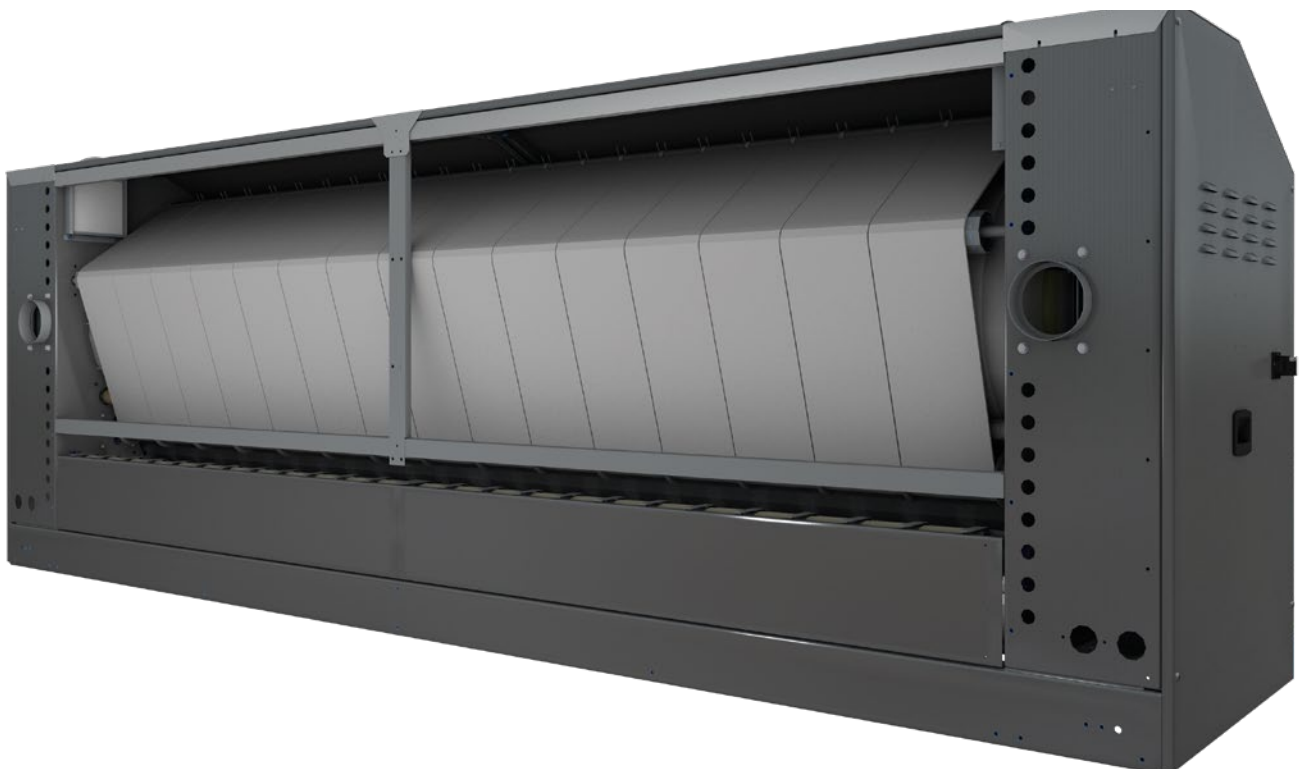
04

Remote Communication

Option only with Touch TP2 Control, perfect for quick response.

05

Technical service menu with Touch TP2 Control



Technical data

		Ø 500				Ø 650		
		UNIT.	PS-50/200 TP2	PS-50/260 TP2	PS-50/300 TP2	PS-65/200 TP2	PS-65/260 TP2	PS-65/330 TP2
GENERAL DETAILS								
Theoretical production 45% humidity	Electric heating	Kg/h	50-70	60-80	80-120	85-90	110-115	150-160
	Atmo. gas heating	Kg/h	50-70	72-96	96-144	-----	-----	-----
	Radiant gas heating	Kg/h	85-90	90-110	130-145	95 -115	125-130	160-180
	Steam heating	Kg/h	50-70	60-80	80-120	85-90	110-115	150-160
Evaporation power		l/h	35 - 49	42 - 56	56 - 84	45-63	55 - 73	73 - 110
Roll Ø		mm	500	500	500	650	650	650
Working width		mm	2000	2600	3300	2000	2600	3300
Height floor-feeding belts		mm	1120	1120	1120	1120	1120	1120
Working speed		mt/min	1-8	1-8	1-8	1-15	1-15	1-15
Control			Touch TP2			Touch TP2		
No. Programs		Nº	5 standard modes			5 standard modes		
Rear exit + length folder		Nº	Opt	Opt	Opt	Opt	Opt	Opt
Large surface contact with linen		º	310	310	310	310	310	310
POWER								
Electric	Heating power	kW	31,5	40,5	54	42	54	72
	Total electric power	kW	32,12	41,37	54,87	43,05	55,05	73,05
Gas	Heating power	kW	40	55	69	52	69	78
	Total electric power	kW	0,62	0,87	0,87	1,05	1,05	1,05
Steam	Heating power	kW	50	64	81	60	76	97
	Total electric power	kW	0,62	0,87	0,87	1,05	1,05	1,05
	Consumption	kW	50*	67*	85*	60*	80*	102*
Roll motor power		kW	0,37	0,37	0,37	0,55	0,55	0,55
Fan motor power		kW	0,25	0,25 x2	0,25 x 2	0,25 x 2	0,25 x2	0,25 x 2
Additional elec. power for folder option kW		kW	0,56	0,56	0,56	0,56	0,56	0,56
Additional elec. power for folder rear exit option		kW	0,74	0,74	0,74	0,74	0,74	0,74
CONNECTIONS								
Ø Gas inlet		BSP	1"	1"	1"	1/2"	1/2"	1/2"
Ø Steam inlet		BSP	3/4"	3/4"	3/4"	3/4"	3/4"	3/4"
Ø Condensed (steam models)		BSP	1/2"	1/2"	1/2"	1/2"	1/2"	1/2"
NET DIMENSIONS								
Width		mm	2845	3445	4145	2845	3445	4145
Depth (without trays)		mm	1070	1070	1070	1070	1070	1070
Height		mm	1420	1420	1420	1420	1420	1420
Weight		Kg	930	1180	1430	1189	1517	1765
PACKING DIMENSIONS								
Width		mm	3145	3745	4445	3145	3745	4445
Depth (without trays)		mm	1153	1153	1153	1153	1153	1153
Height		mm	1672	1672	1672	1672	1672	1672
Weight		Kg	972	1470	1480	1231	1567	1815
Volume		m³	6,06	7,22	8,57	6,06	7,22	8,57
OTHERS								
Fume outlet		Nº	1	2	2	2	2	2
Ø Fume outlet		mm	153	153	153	153	153	153
Air flow		m³/h	600	1200	1200	1200	1200	1200
Noise Level		dB	65	65	65	65	65	65

*Fagor reserves the right to modify the technical data without notice.



121158929-2022-9

ONNERA GROUP

